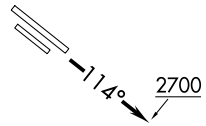


HAWWC THREE DEPARTURE (RNAV)
(HAWWC3.HAWWC) 19JUL18

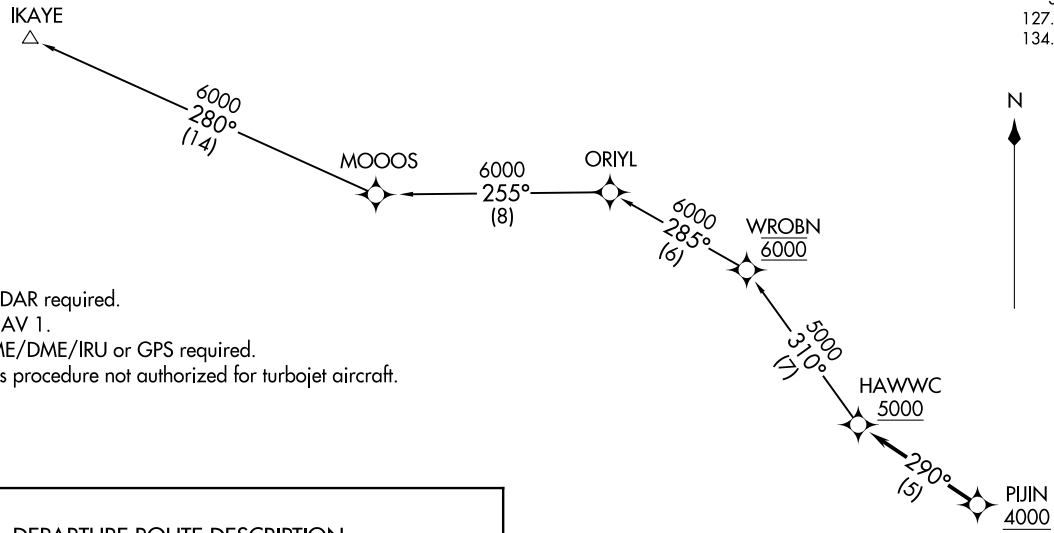
(HAWWC3.HAWWC) 18200
HAWWC THREE DEPARTURE (RNAV)
AL-5179 (FAA)

ZAMPERINI FIELD (TOA)
TORRANCE, CALIFORNIA

GND CON 120.9
TORRANCE TOWER*
133.075 257.8 (NORTH)
124.0 257.8 (SOUTH)
SOCAL DEP CON
127.2 269.6 (11L/R)
134.9 360.7 (29L/R)



**TOP ALTITUDE:
6000**



NOTE: RADAR required.
NOTE: RNAV 1.
NOTE: DME/DME/IRU or GPS required.
NOTE: This procedure not authorized for turbojet aircraft.

DEPARTURE ROUTE DESCRIPTION

TAKEOFF RUNWAYS 11L/R: Climb heading 114° to 2700 for vectors to PIJIN, cross PIJIN at or above 4000, then on track 290° to cross HAWWC at or above 5000, thence
. . . . on (transition). Maintain 6000. Expect higher altitude 10 minutes after departure.

IKAYE TRANSITION (HAWWC3.IKAYE)

TAKEOFF MINIMUMS

Rwys 11L/R: Standard with minimum climb of 325 feet per NM to 1600.
Rwys 29L/R: NA-ATC.

NOTE: Chart not to scale.

TORRANCE, CALIFORNIA
ZAMPERINI FIELD (TOA)