

VOR/DME OTB 109.8 Chan 35	APP CRS 023°	Rwy Idg TDZE Apt Elev N/A N/A 347
--	------------------------	--

COPTER VOR 023°

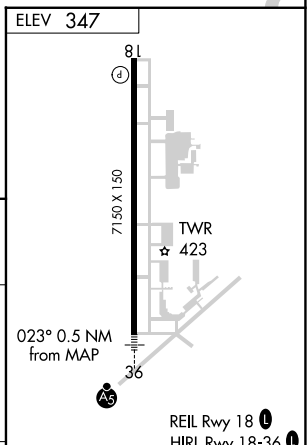
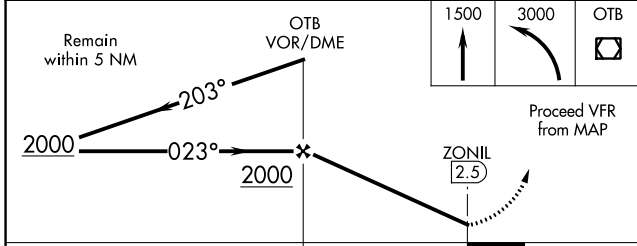
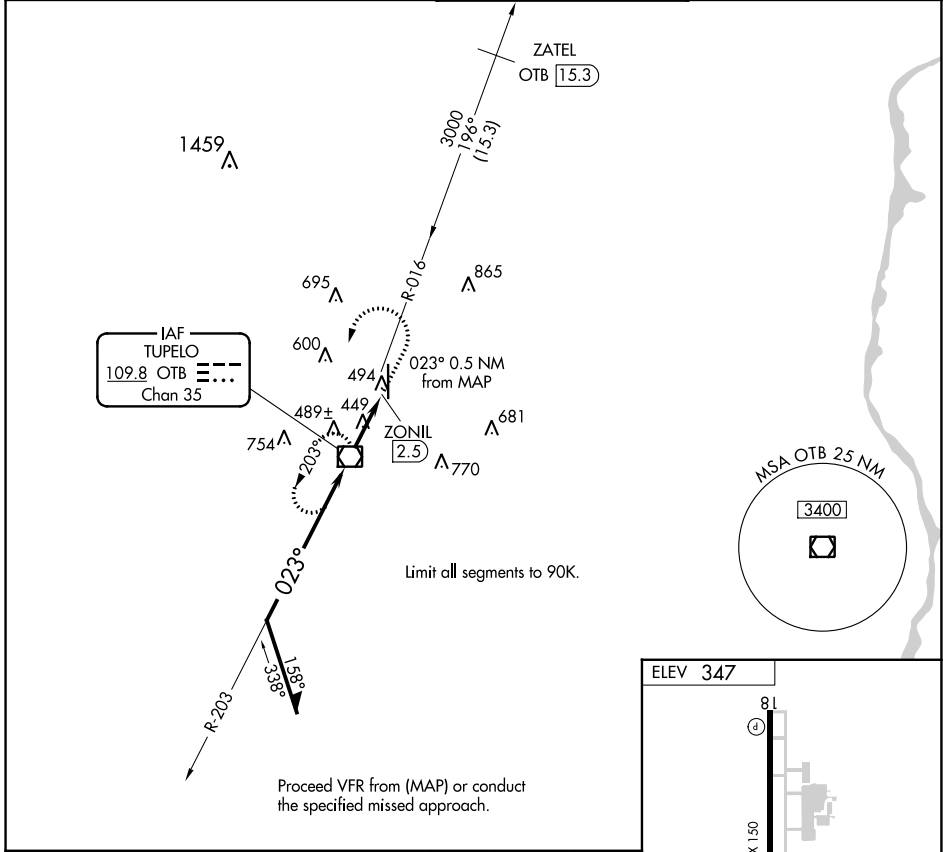
TUPELO RGNL (TUP)

RADAR required for procedure entry. DME required.

When local altimeter setting not received, use Columbus AFB altimeter setting and increase MDA 120 feet.

MISSED APPROACH: Climb to 1500 then climbing left turn 3000 direct OTB VOR/DME and hold.

ASOS 133.525	MEMPHIS CENTER 128.5 279.55	TUPELO TOWER* 118.775 (CTAF) 0 254.275	GND CON 121.825 254.275
------------------------	---------------------------------------	--	-----------------------------------



CATEGORY	COPTER	FAF to MAP 2.5 NM												
H-023	720-1 373 (400-1)	<table border="1"> <tr> <td>Knots</td> <td>45</td> <td>60</td> <td>75</td> <td>90</td> <td>105</td> </tr> <tr> <td>Min:Sec</td> <td>3:20</td> <td>2:30</td> <td>2:00</td> <td>1:40</td> <td>1:26</td> </tr> </table>	Knots	45	60	75	90	105	Min:Sec	3:20	2:30	2:00	1:40	1:26
Knots	45	60	75	90	105									
Min:Sec	3:20	2:30	2:00	1:40	1:26									

SC-4, 22 FEB 2024 to 21 MAR 2024

SC-4, 22 FEB 2024 to 21 MAR 2024

LOC/DME I-TUP 108.5 Chan 22	APP CRS 002°	Rwy Idg TDZE Apt Elev	7150 347 347
---	------------------------	-----------------------------	---

ILS Y or LOC Y RWY 36

TUPELO RGNL (TUP)

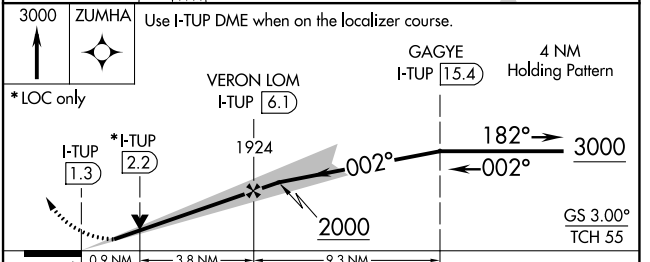
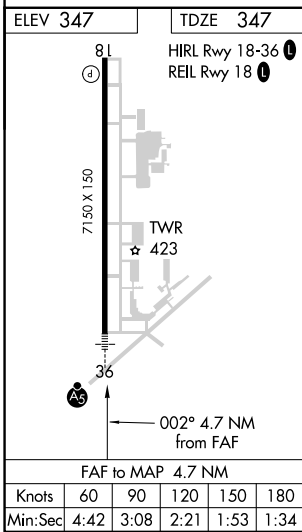
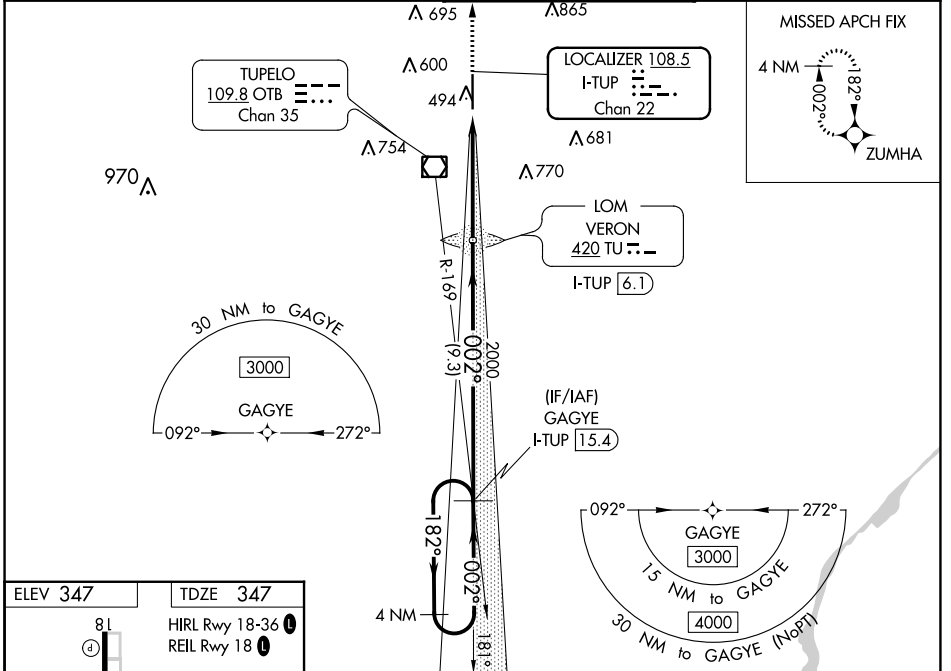
RNAV 1-GPS required.
DME or ADF required for LOC only.

⚠ When local altimeter setting not received, use Columbus AFB altimeter setting and increase all DA 112 feet and all MDA 120 feet; increase S-LOC 36 Cat C and D visibility $\frac{3}{8}$ SM and Circling Cat C and D visibility $\frac{1}{2}$ SM. For inop ALS when using Columbus AFB altimeter setting, increase S-ILS 36 all Cats visibility $\frac{1}{2}$ SM. VDP NA when using Columbus AFB altimeter setting. Autopilot coupled approach NA below 650 feet.



MISSED APPROACH:
Climb to 3000 direct ZUMHA and hold.

ASOS 133.525	MEMPHIS CENTER 128.5 279.55	TUPELO TOWER ★ 118.775 (CTAF) 0 254.275	GND CON 121.825 254.275
------------------------	---------------------------------------	---	-----------------------------------



CATEGORY	A	B	C	D
S-ILS 36	547- $\frac{1}{2}$		200 (200- $\frac{1}{2}$)	
S-LOC 36	700- $\frac{1}{2}$	353 (400- $\frac{1}{2}$)	700- $\frac{5}{8}$	353 (400- $\frac{5}{8}$)
C CIRCLING	820-1	473 (500-1)	900-1 $\frac{1}{2}$ 553 (600-1 $\frac{1}{2}$)	1140-2 $\frac{1}{2}$ 793 (800-2 $\frac{1}{2}$)

SC-4, 22 FEB 2024 to 21 MAR 2024

SC-4, 22 FEB 2024 to 21 MAR 2024

LOM TU 420	APP CRS 001°	Rwy Idg 7150 TDZE 347 Apt Elev 347
----------------------	------------------------	---

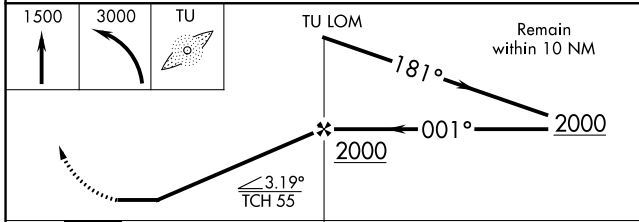
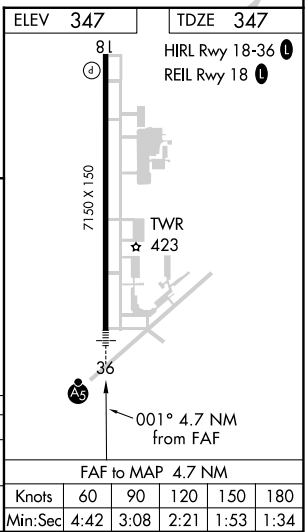
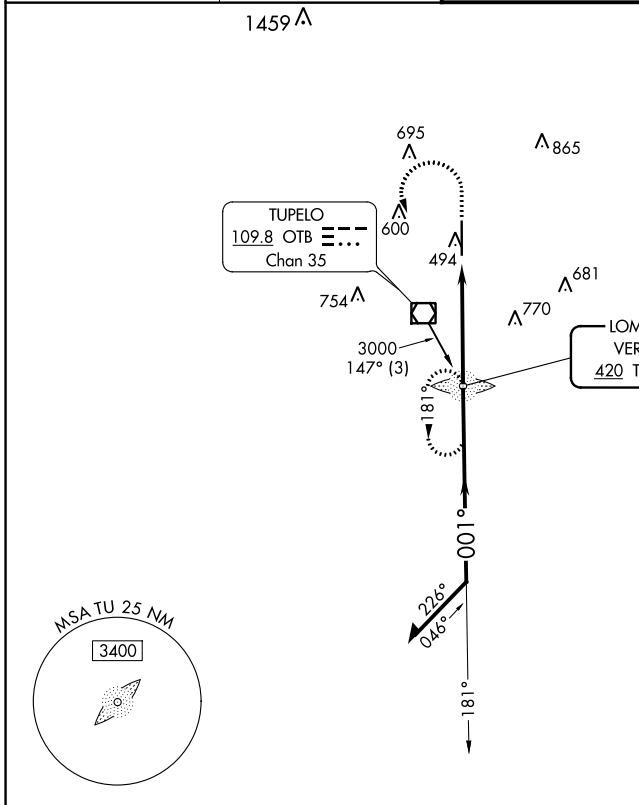
NDB RWY 36

TUPELO RGNL (TUP)

When local altimeter setting not received, use Columbus AFB altimeter setting and increase all MDA 120 feet, increase S-36 Cats C and D visibility 3/8 SM and Circling Cats C and D 1/2 SM. For inop ALS, increase S-36 Cat A and B visibility to 1 SM and Cat C and D to 1 3/8 SM. For inop ALS when using Columbus AFB altimeter setting, increase S-36 Cat A and B visibility to 1 SM and Cat C and D to 1 3/4 SM.

MALS R
 MISSED APPROACH:
 Climb to 1500 then climbing left turn to 3000 direct TU LOM and hold.

ASOS 133.525	MEMPHIS CENTER 128.5 279.55	TUPELO TOWER ★ 118.775 (CTAF) 254.275	GND CON 121.825 254.275
------------------------	---------------------------------------	---	-----------------------------------



CATEGORY	A	B	C	D
S-36	840-3/4 493 (500-3/4)		840-1 493 (500-1)	
CIRCLING	840-1 493 (500-1)		900-1 1/2 553 (600-1 1/2)	1140-2 1/2 793 (800-2 1/2)

Knots	60	90	120	150	180
Min:Sec	4:42	3:08	2:21	1:53	1:34

SC-4, 22 FEB 2024 to 21 MAR 2024

SC-4, 22 FEB 2024 to 21 MAR 2024

WAAS CH 77712 W18A	APP CRS 182°	Rwy Idg 7150 TDZE 344 Apt Elev 346
--	------------------------	---

RNAV (GPS) RWY 18

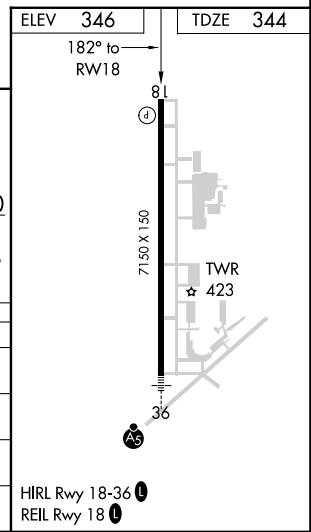
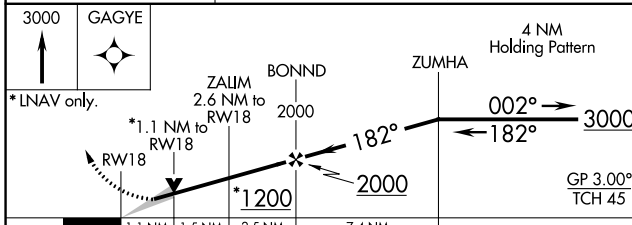
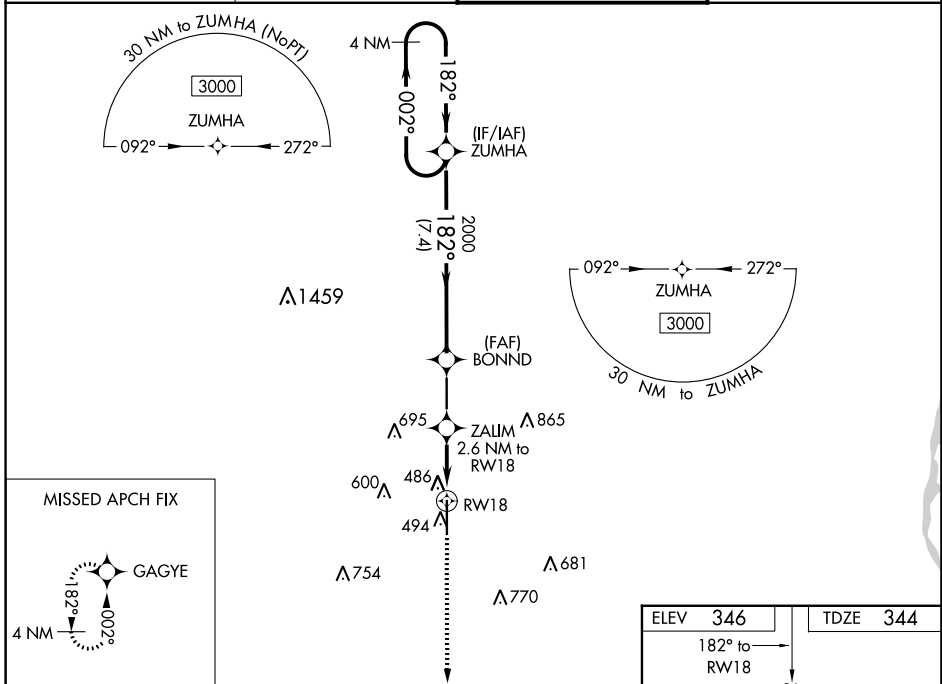
TUPELO RGNL (TUP)

RNP APCH.

⚠ For uncompensated Baro-VNAV systems, LNAV/VNAV NA below -9°C (16°F) or above 54°C (130°F). When local altimeter not received, use Columbus AFB altimeter setting and increase all DA 112 feet and all MDA 120 feet; increase LPV all Cats visibility ½ mile, LNAV/VNAV all Cats visibility ½ mile and LNAV Cats C and D ½ mile and Circling Cats C and D ½ mile. Baro-VNAV and VDP NA when using Columbus AFB altimeter setting.

MISSED APPROACH:
Climb to 3000 direct GAGYE and hold.

ASOS 133.525	MEMPHIS CENTER 128.5 279.55	TUPELO TOWER ★ 118.775 (CTAF) 0 254.275	GND CON 121.825 254.275
------------------------	---------------------------------------	---	-----------------------------------



CATEGORY	A	B	C	D
LPV DA	544- ³ / ₄		200 (200- ³ / ₄)	
LNAV/VNAV DA	659-1		315 (400-1)	
LNAV MDA	740-1 396 (400-1)		740-1 ¹ / ₈ 396 (400-1 ¹ / ₈)	
C CIRCLING	820-1 474 (500-1)		900-1 ¹ / ₂ 1140-2 ¹ / ₂ 554 (600-1 ¹ / ₂) 794 (800-2 ¹ / ₂)	

SC-4, 22 FEB 2024 to 21 MAR 2024

SC-4, 22 FEB 2024 to 21 MAR 2024

WAAS CH 93712 W36A	APP CRS 002°	Rwy Idg TDZE 346 Apt Elev 346
--	------------------------	---

RNAV (GPS) RWY 36

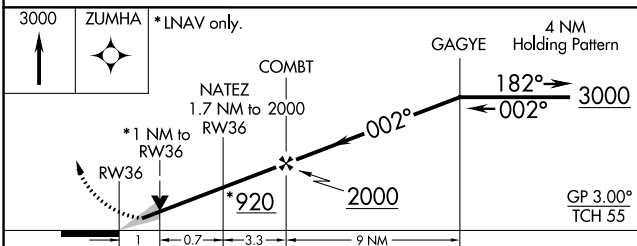
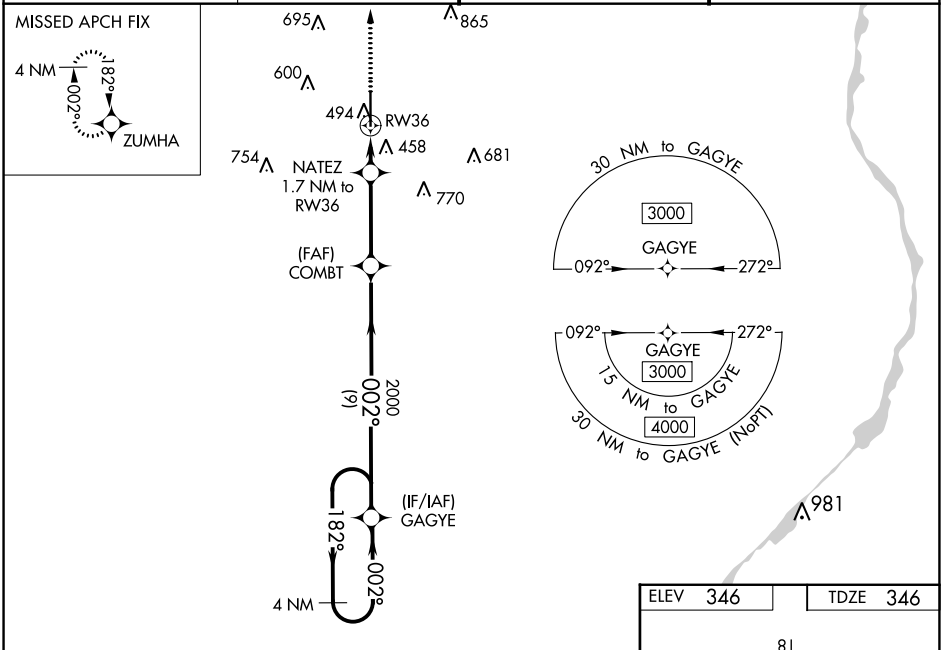
TUPELO RGNL (TUP)

RNP APCH:

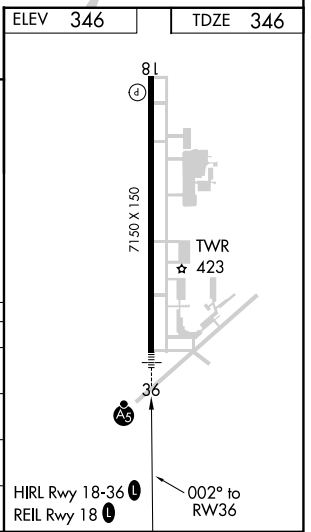
⚠ For uncompensated Baro-VNAV systems, LNAV/VNAV NA below -9°C (16°F) or above 54°C (130°F). When local altimeter setting not received, use Columbus AFB altimeter setting and increase all DA 112 feet and all MDA 120 feet; increase LNAV/VNAV all Cats visibility ½ mile and LNAV Cats C and D ¾ mile and Circling Cats C and D ½ mile. For inop ALS when using Columbus AFB altimeter setting, increase LPV all Cats visibility ½ SM. Baro-VNAV and VDP NA when using Columbus AFB altimeter setting.

MALSR MISSED APPROACH:
Climb to 3000 direct ZUMHA and hold.

ASOS 133.525	MEMPHIS CENTER 128.5 279.55	TUPELO TOWER * 118.775 (CTAF) 0 254.275	GND CON 121.825 254.275
------------------------	---------------------------------------	---	-----------------------------------



CATEGORY	A	B	C	D
LPV DA		546-½	200 (200-½)	
LNAV/VNAV DA		730-¾	384 (400-¾)	
LNAV MDA	720-½	374 (400-½)	720-⅝	374 (400-⅝)
CIRCLING	820-1	474 (500-1)	900-1½ 554 (600-1½)	1140-2½ 794 (800-2½)



SC-4, 22 FEB 2024 to 21 MAR 2024

SC-4, 22 FEB 2024 to 21 MAR 2024

VOR/DME OTB 109.8 Chan 35	APP CRS 196°	Rwy Idg 7150 TDZE 344 Apt Elev 347
---	------------------------	---

VOR RWY 18

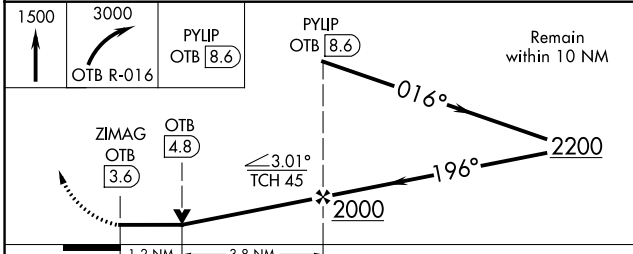
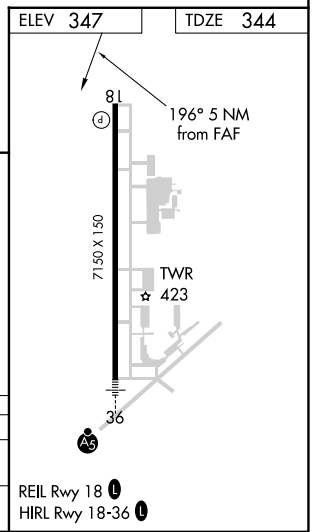
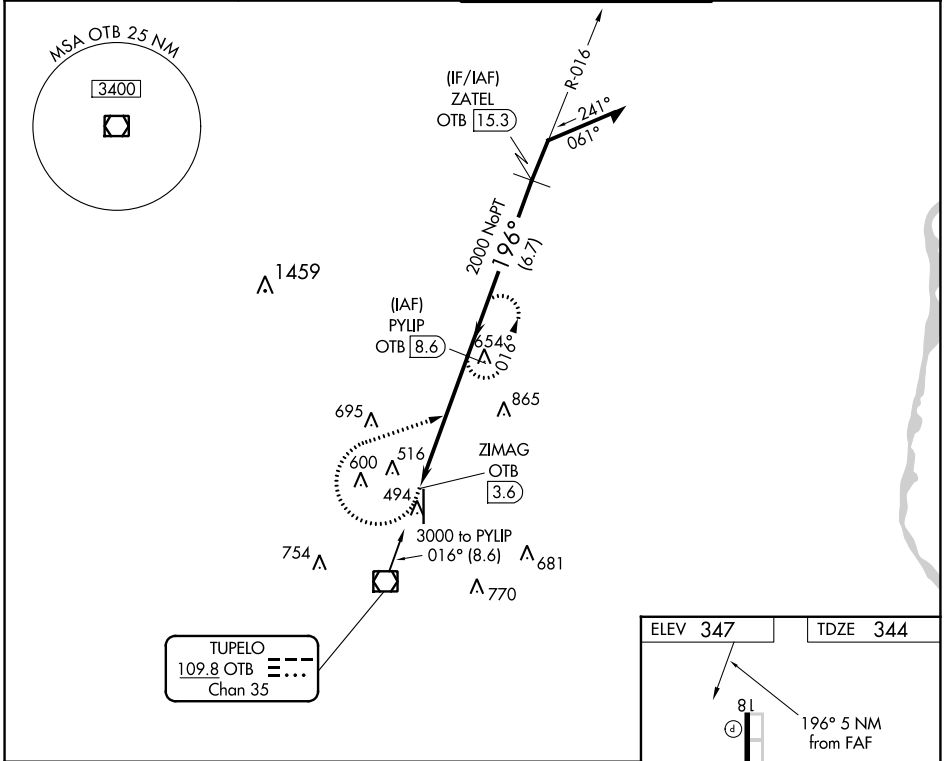
TUPELO RGNL (TUP)

RADAR required for procedure entry. DME required.

⚠ When local altimeter setting not received, use Columbus AFB altimeter setting and increase all MDA 120 feet. Increase S-18 Cat C/D visibility $\frac{3}{8}$ SM; increase Circling Cat C/D visibility $\frac{1}{2}$ SM. VDP NA when using Columbus AFB altimeter setting.

MISSED APPROACH: Climb to 1500 then climbing right turn to 3000 on OTB VOR/DME R-016 to PYLIP/OTB 8.6 DME and hold.

ASOS 133.525	MEMPHIS CENTER 128.5 279.55	TUPELO TOWER ★ 118.775 (CTAF) 0 254.275	GND CON 121.825 254.275
------------------------	---------------------------------------	---	-----------------------------------



CATEGORY	A	B	C	D
S-18	780-1 436 (500-1)		780-1¼ 436 (500-1¼)	
CIRCLING	820-1 473 (500-1)		900-1½ 553 (600-1½)	1140-2½ 793 (800-2½)

SC-4, 22 FEB 2024 to 21 MAR 2024

SC-4, 22 FEB 2024 to 21 MAR 2024