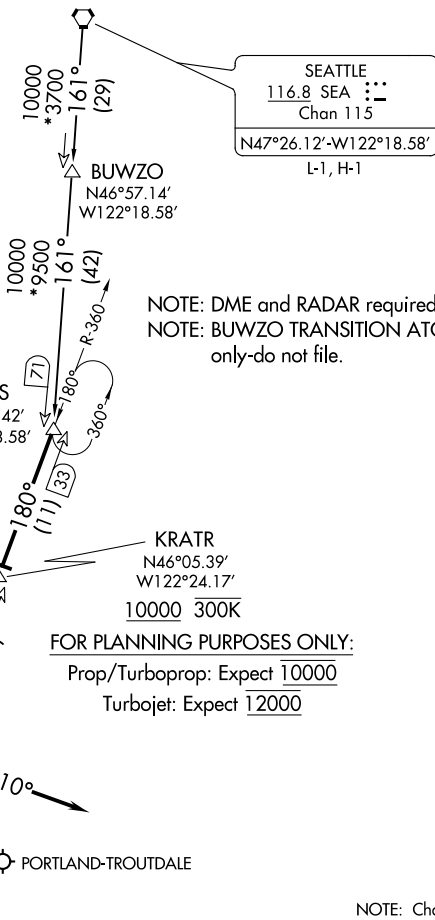


(HELNS.HELNS6) 20198  
**HELNS SIX ARRIVAL**

AL-330 (FAA)

PORTLAND, OREGON

PORTLAND APP CON  
 124.35 299.2  
 HIO ATIS  
 127.65  
 PDX D-ATIS  
 128.35 269.9



BATTLE GROUND  
 116.6 BTG  
 Chan 113  
 N45°44.87'-W122°35.49'

SEATTLE  
 116.8 SEA  
 Chan 115  
 N47°26.12'-W122°18.58'

KRATR  
 N46°05.39'  
 W122°24.17'  
 10000 300K

FOR PLANNING PURPOSES ONLY:  
 Prop/Turboprop: Expect 10000  
 Turbojet: Expect 12000

NW-1, 08 OCT 2020 to 05 NOV 2020

NW-1, 08 OCT 2020 to 05 NOV 2020



NOTE: Chart not to scale.

**ARRIVAL ROUTE DESCRIPTION**

**BUWZO TRANSITION (BUWZO.HELNS6):** From over BUWZO via SEA R-161 to HELNS. Thence. . . .

**SEATTLE TRANSITION (SEA.HELNS6):** From over SEA VORTAC via SEA R-161 to HELNS. Thence. . . .

. . . . from over HELNS on BTG VORTAC R-360 to cross KRATR at or above 10000, then as depicted to cross BTG VORTAC at or above 7000.

**LANDING EAST:** From BTG VORTAC heading 280°, expect RADAR vectors to final approach course.

**LANDING WEST:** From BTG VORTAC heading 110°, expect RADAR vectors to final approach course.

**HELNS SIX ARRIVAL**  
 (HELNS.HELNS6) 29MAR18

PORTLAND, OREGON