

WAAS CH 90131 W10A	APP CRS 097°	Rwy Idg TDZE Apt Elev	3400 1236 1238
--	------------------------	-----------------------------	---

RNAV (GPS) RWY 10

NEILLSVILLE MUNI (VIQ)

Baro-VNAV NA. DME/DME RNP-0.3 NA. Helicopter visibility reduction below 3/4 SM NA. Use Marshfield altimeter setting; when not received, use Wisconsin Rapids altimeter setting and increase all DA 63 feet and all MDA 80 feet. Increase LPV and LNAV/VNAV Cats A/B visibility 1/4 mile.

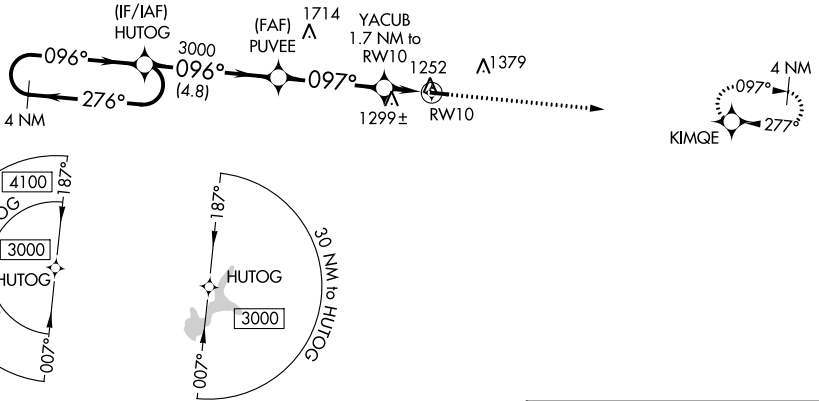
MISSED APPROACH: Climb to 3000 direct KIMQE and hold.

MFI ASOS
121.575

MINNEAPOLIS CENTER
124.4 317.7

UNICOM
122.8 (CTAF) 0

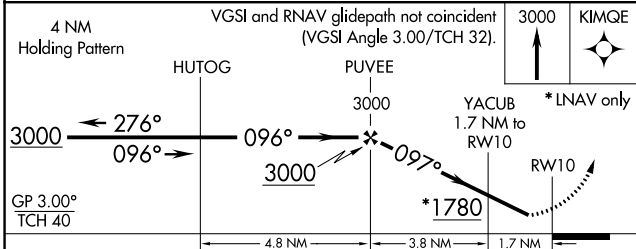
3095



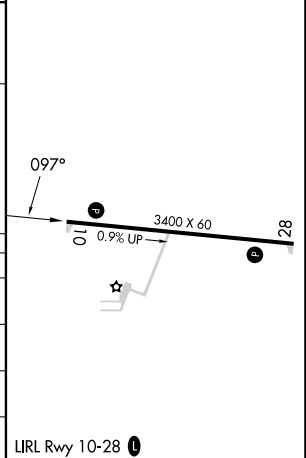
EC-3, 22 FEB 2024 to 21 MAR 2024

EC-3, 22 FEB 2024 to 21 MAR 2024

ELEV 1238	TDZE 1236
-----------	-----------



CATEGORY	A	B	C	D
LPV DA	1526-1	290 (300-1)		NA
LNAV/VNAV DA	1526-1	290 (300-1)		NA
LNAV MDA	1600-1	364 (400-1)		NA
CIRCLING	1720-1	482 (500-1)		NA



LIRL Rwy 10-28 0

APP CRS Rwy Idg **3400**
277° TDZE **1237**
 Apt Elev **1238**

RNAV (GPS) RWY 28

NEILLSVILLE MUNI (VIQ)

RNP APCH.

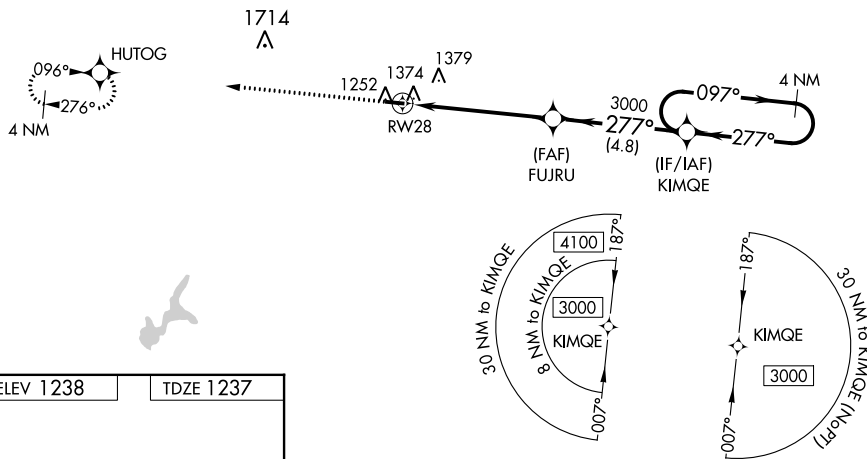
▼ **▲** NA Rwy 28 helicopter visibility reduction below 3/4 SM NA. Use Marshfield altimeter setting; when not received, use Wisconsin Rapids altimeter setting and increase all MDA 80 feet.

MISSED APPROACH:
 Climb to 3000 direct
 HUTOG and hold.

MFI ASOS
121.575

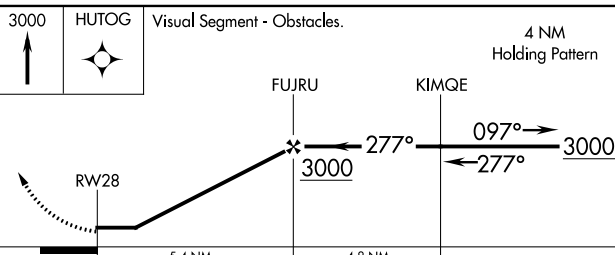
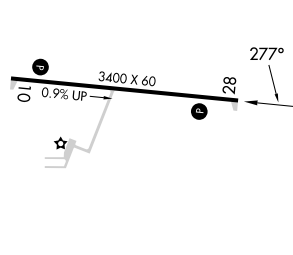
MINNEAPOLIS CENTER
124.4 317.7

UNICOM
122.8 (CTAF) **📻**



ELEV 1238

TDZE 1237



CATEGORY	A	B	C	D
LNAV MDA	1680-1	443 (500-1)	NA	
CIRCLING	1720-1	482 (500-1)	NA	

LURL Rwy 10-28 **📻**