

VENICE, FLORIDA

AL-5960 (FAA)

23278

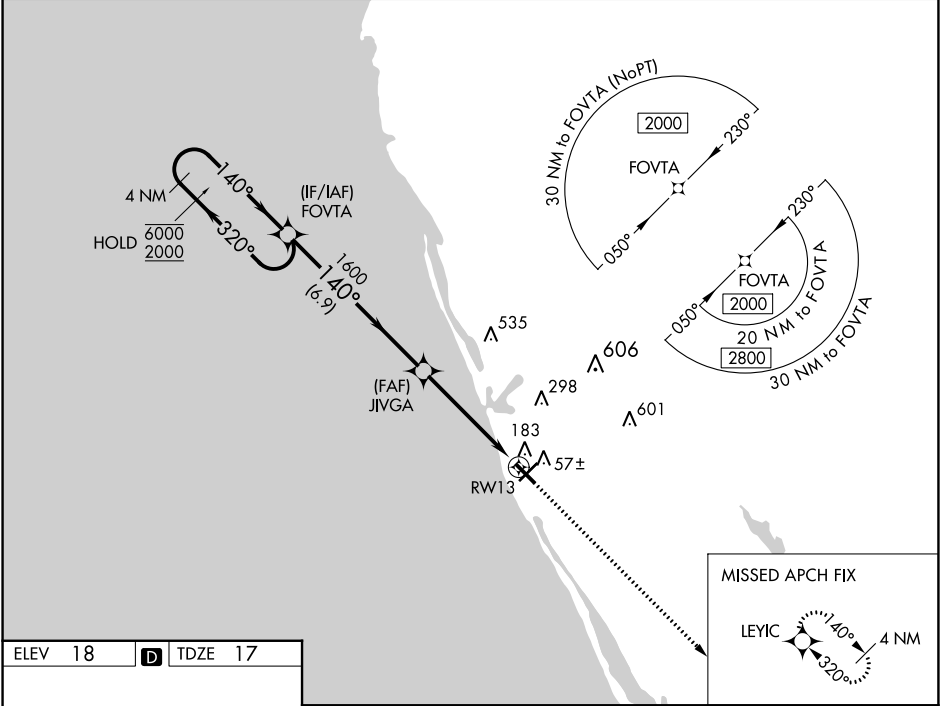
WAAS CH 86423	APP CRS 140°	Rwy Idg TDZE Apt Elev	5000 17 18
W13A			

RNAV (GPS) RWY 13

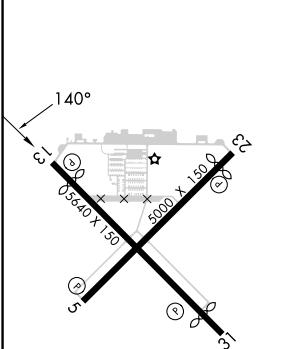
VENICE MUNI (VNC)

RNP APCH - GPS.		MISSED APPROACH: Climb to 2000 direct LEYIC and hold.	
<p>⚠ Rwy 13 helicopter visibility reduction below 3/4 SM NA. ⚠ For uncompensated Baro-VNAV systems, LNAV/VNAV NA below -15°C or above 54°C.</p>			

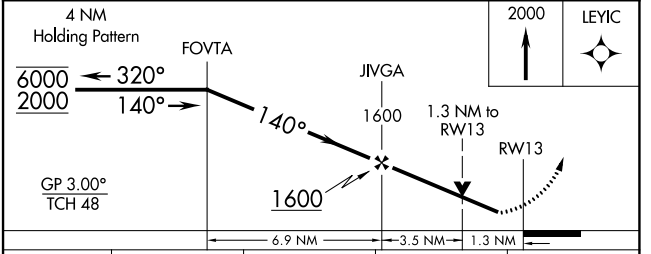
AWOS-3 119.275	TAMPA APP CON 119.65 353.575	CLNC DEL 118.075	UNICOM 122.725 (CTAF) 0
--------------------------	--	----------------------------	-----------------------------------



ELEV 18	D	TDZE 17
---------	----------	---------



MIRL Rwy 5-23 and 13-31 **0**
 REIL Rwy 5, 13 and 23 **0**
 REIL Rwy 31



CATEGORY	A	B	C	D
LPV DA		267-1	250 (300-1)	
LNAV/VNAV DA		364-1	347 (400-1)	
LNAV MDA	460-1	443 (500-1)	460-1 3/8	443 (500-1 1/8)
CIRCLING	500-1	482 (500-1)	680-1 3/4 662 (700-1 3/4)	920-3 902 (1000-3)

VENICE, FLORIDA
 Amdt 2A 05OCT23

27°04'N-82°26'W

RNAV (GPS) RWY 13

SE-3, 22 FEB 2024 to 21 MAR 2024

SE-3, 22 FEB 2024 to 21 MAR 2024

VENICE, FLORIDA

AL-5960 (FAA)

23166

WAAS CH 53433 W23A	APP CRS 230°	Rwy Idg 4377 TDZE 18 Apt Elev 18
--	------------------------	---

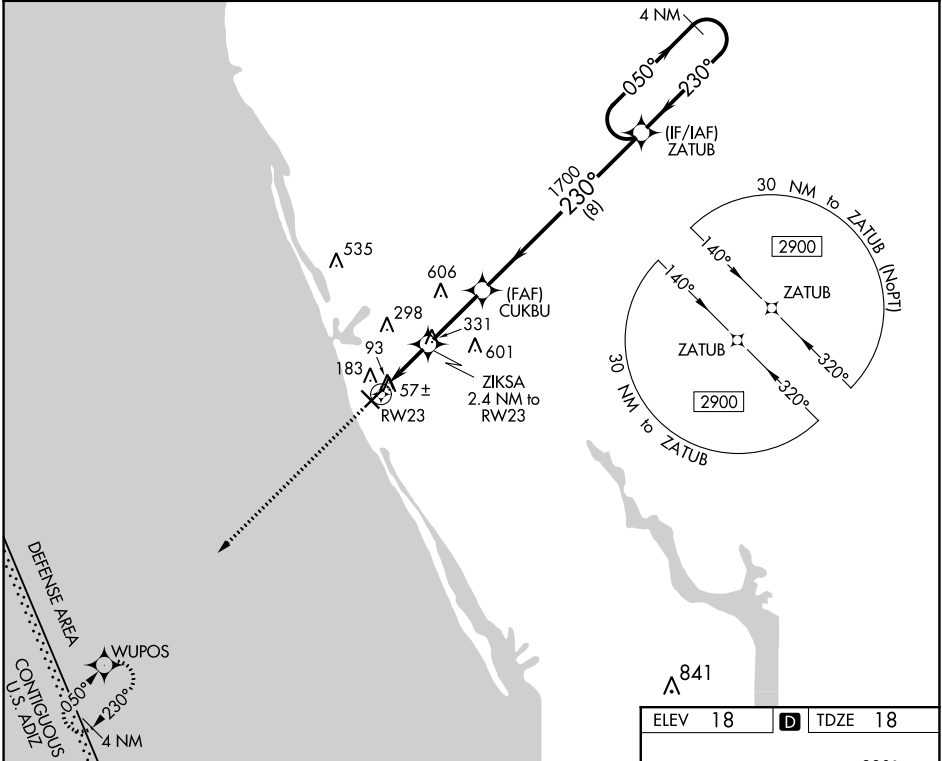
RNAV (GPS) RWY 23

VENICE MUNI (VNC)

⚠ When local altimeter setting not received, use Sarasota altimeter setting and increase all MDA 60 feet and increase LP and LNAV Cats C, D visibility $\frac{1}{8}$ mile, and Circling Cat C visibility $\frac{1}{4}$ mile. DME/DME RNP-0.3 NA. VDP NA with Sarasota altimeter setting. Helicopter visibility reduction below $\frac{3}{4}$ SM NA.

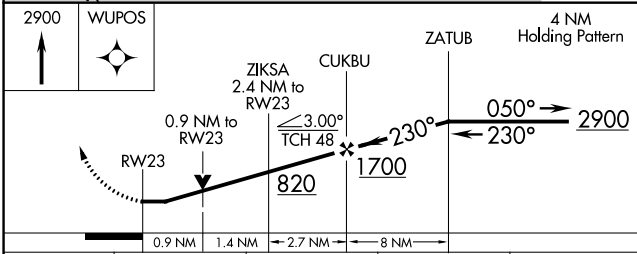
MISSED APPROACH:
Climb to 2900 direct WUPOS and hold.

AWOS-3 119.275	TAMPA APP CON 119.65 353.575	CLNC DEL 118.075	UNICOM 122.725 (CTAF) 1
--------------------------	--	----------------------------	-----------------------------------



SE-3, 22 FEB 2024 to 21 MAR 2024

SE-3, 22 FEB 2024 to 21 MAR 2024



ELEV 18	D TDZE 18
---------	------------------

MIRL Rwy 5-23 and 13-31 **1**
REIL Rwy 5, 13 and 23 **1**
REIL Rwy 31

CATEGORY	A	B	C	D
LP MDA	360-1 342 (400-1)			
LNAV MDA	440-1	422 (500-1)	440-1 $\frac{1}{4}$	422 (500-1 $\frac{1}{4}$)
C CIRCLING	500-1	482 (500-1)	700-2 682 (700-2)	920-3 902 (1000-3)

VENICE, FLORIDA
Orig-B 16OCT14

27°04'N-82°26'W

RNAV (GPS) RWY 23

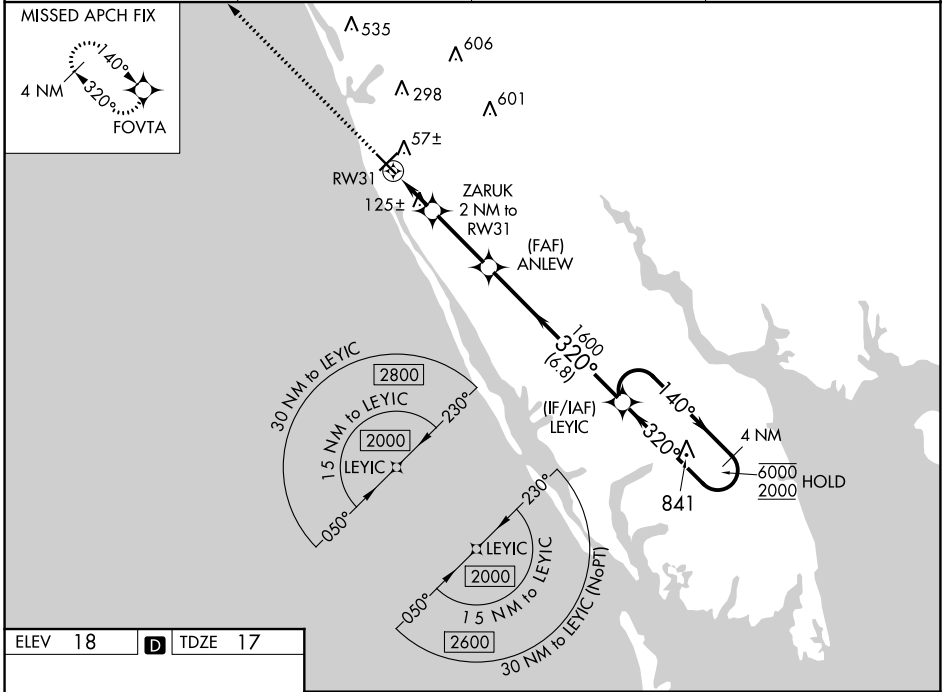
VENICE MUNI (VNC)

WAAS CH 78223 W31A	APP CRS 320°	Rwy Idg 5000 TDZE 17 Apt Elev 18
--	------------------------	---

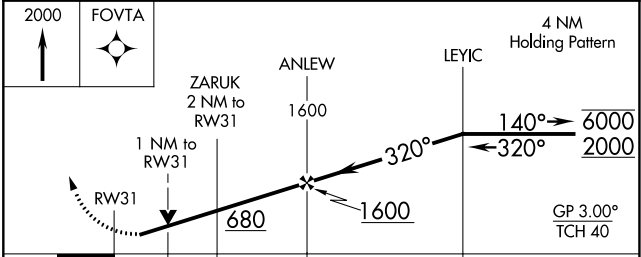
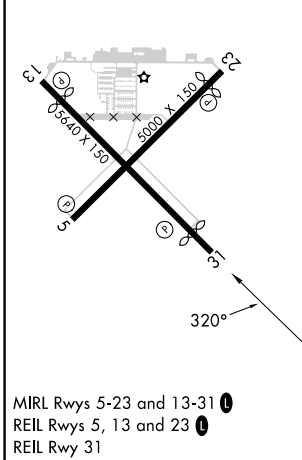
RNAV (GPS) RWY 31

VENICE MUNI (VNC)

RNP APCH - GPS.		MISSED APPROACH: Climb to 2000 direct FOVTA and hold.	
Rwy 31 helicopter visibility reduction below 3/4 SM NA. For uncompensated Baro-VNAV systems, LNAV/VNAV NA below -15°C or above 54°C.			
AWOS-3 119.275	TAMPA APP CON 119.65 353.575	CLNC DEL 118.075	UNICOM 122.725 (CTAF) 1



ELEV 18	D	TDZE 17
---------	----------	---------



CATEGORY	A	B	C	D
LPV DA		267-1	250 (300-1)	
LNAV/VNAV DA		296-1	279 (300-1)	
LNAV MDA		380-1	363 (400-1)	
CIRCLING	500-1	482 (500-1)	680-1 3/4 662 (700-1 3/4)	920-3 902 (1000-3)

SE-3, 22 FEB 2024 to 21 MAR 2024

SE-3, 22 FEB 2024 to 21 MAR 2024

WAAS CH 69234 W05A	APP CRS 050°	Rwy Idg 5000 TDZE 17 Apt Elev 18
--	------------------------	---

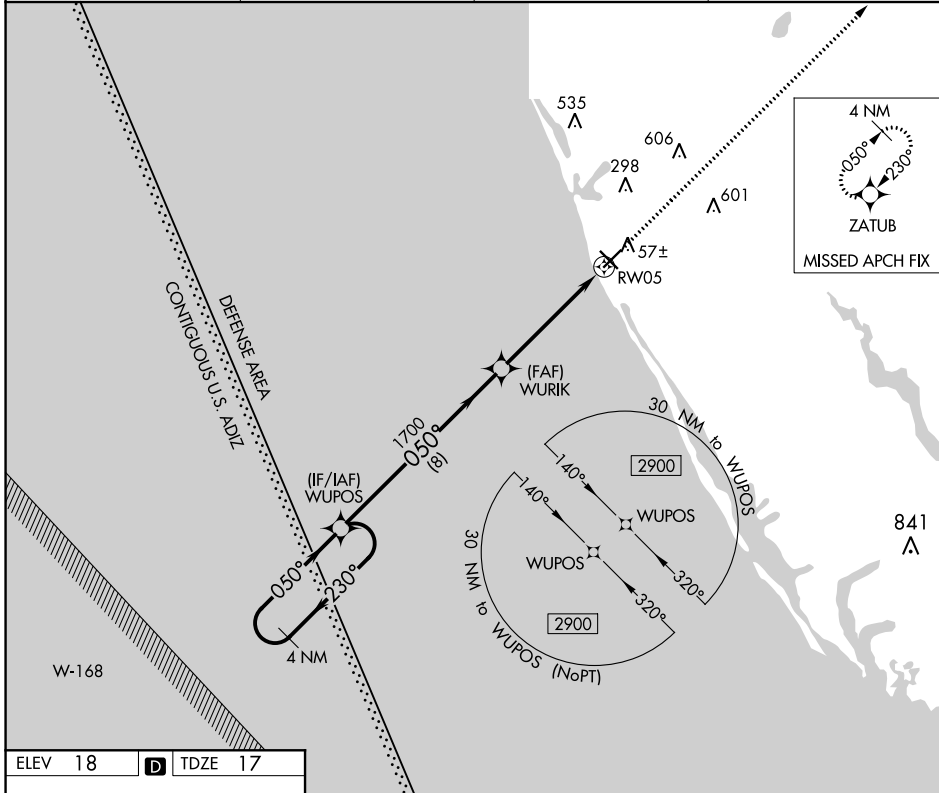
RNAV (GPS) RWY 5

VENICE MUNI (VNC)

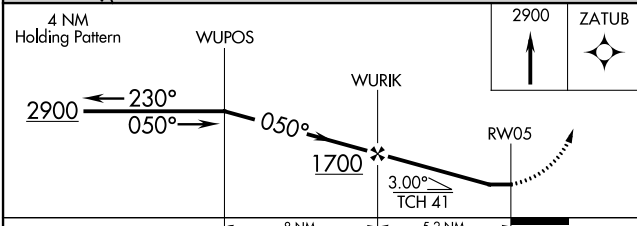
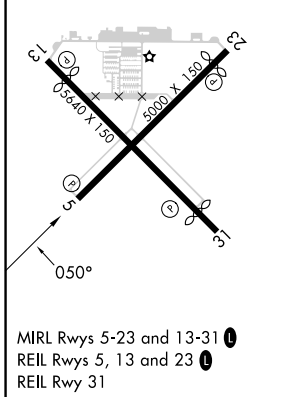
▼ When local altimeter setting not received, use Sarasota altimeter setting and increase all MDA 60 feet, increase LNAV Cat C, D visibility 1/8 mile, and Circling Cat C visibility 1/4 mile. DME/DME RNP-0.3 NA.
▲ Helicopter visibility reduction below 3/4 SM NA.

MISSED APPROACH:
Climb to 2900 direct ZATUB and hold.

AWOS-3 119.275	TAMPA APP CON 119.65 353.575	CLNC DEL 118.075	UNICOM 122.725 (CTAF)
--------------------------	--	----------------------------	---------------------------------



ELEV 18	D	TDZE 17
---------	----------	---------



CATEGORY	A	B	C	D
LP MDA	460-1	443 (500-1)	460-1 ³ / ₈	443 (500-1 ³ / ₈)
LNAV MDA	480-1	463 (500-1)	480-1 ³ / ₈	463 (500-1 ³ / ₈)
C CIRCLING	500-1	482 (500-1)	700-2 682 (700-2)	920-3 902 (1000-3)

SE-3, 22 FEB 2024 to 21 MAR 2024

SE-3, 22 FEB 2024 to 21 MAR 2024