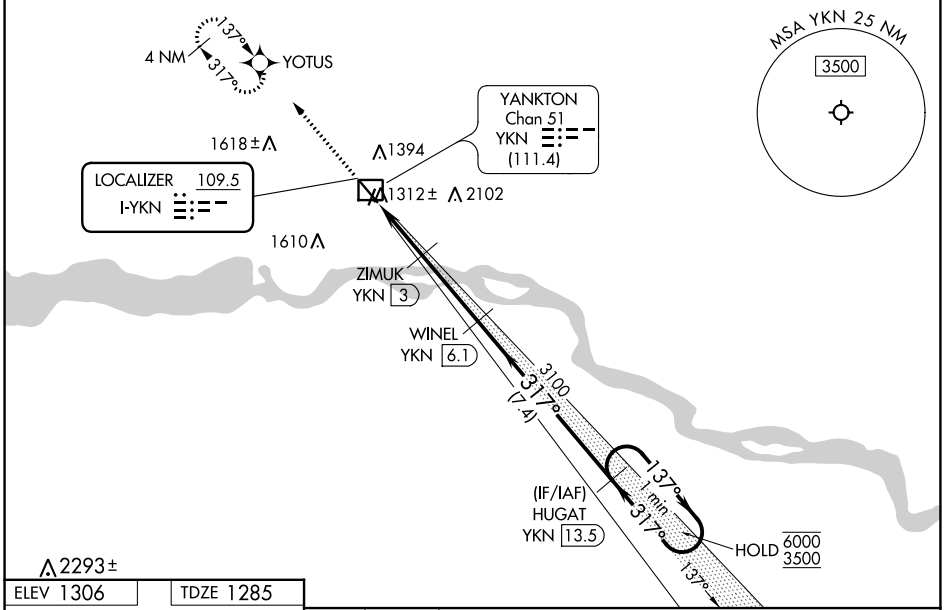


LOC I-YKN <b>109.5</b>	APP CRS <b>317°</b>	Rwy Idg <b>6094</b>
		TDZE <b>1285</b>
		Apt Elev <b>1306</b>

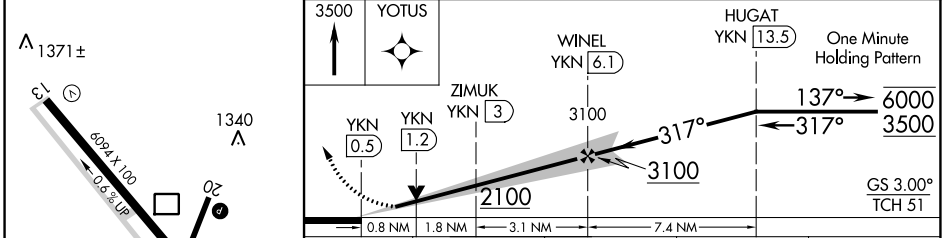
# ILS or LOC RWY 31

CHAN GURNEY MUNI (YKN)

RNP APCH - GPS.		MALSR 	MISSED APPROACH: Climb to 3500 direct YOTUS and hold, continue climb-in-hold to 3500.
DME required for LOC only. RADAR required for procedure entry.			
<p><b>NA</b> Circling NA east of Rwy 20 and northeast of Rwy 31. DME from YKN DME.</p> <p><b>NA</b> DME use requires simultaneous reception of I-YKN and YKN DME. For inop ALS, increase S-LOC 31 Cat C/D visibility to 2½ SM and increase ZIMUK fix minimums S-LOC 31 Cat C/D visibility to ¾ SM. * DME from YKN DME.</p>			
AWOS-3PT <b>119.05</b>	MINNEAPOLIS CENTER <b>125,025 235,625</b>	UNICOM <b>122.8 (CTAF)</b>	



ELEV 1306	TDZE 1285
-----------	-----------



CATEGORY	A	B	C	D
S-ILS 31	1485-½ 200 (200-½)			
S-LOC 31	2100-½ 815 (800-½)	2100-¾ 815 (800-¾)	2100-1⅞	815 (800-1⅞)
<b>C</b> CIRCLING	2100-1 794 (800-1)	2100-1¼ 794 (800-1¼)	2100-2½	794 (800-2½)
ZIMUK FIX MINIMUMS*				
S-LOC 31	1560-½ 275 (300-½)			
<b>C</b> CIRCLING	1760-1 454 (500-1)	1780-1 474 (500-1)	1980-2 674 (700-2)	1980-2¼ 674 (700-2¼)

- REIL Rwy 13
- HIRL Rwy 13-31
- MIRL Rwy 2-20

NC-1, 22 FEB 2024 to 21 MAR 2024

NC-1, 22 FEB 2024 to 21 MAR 2024

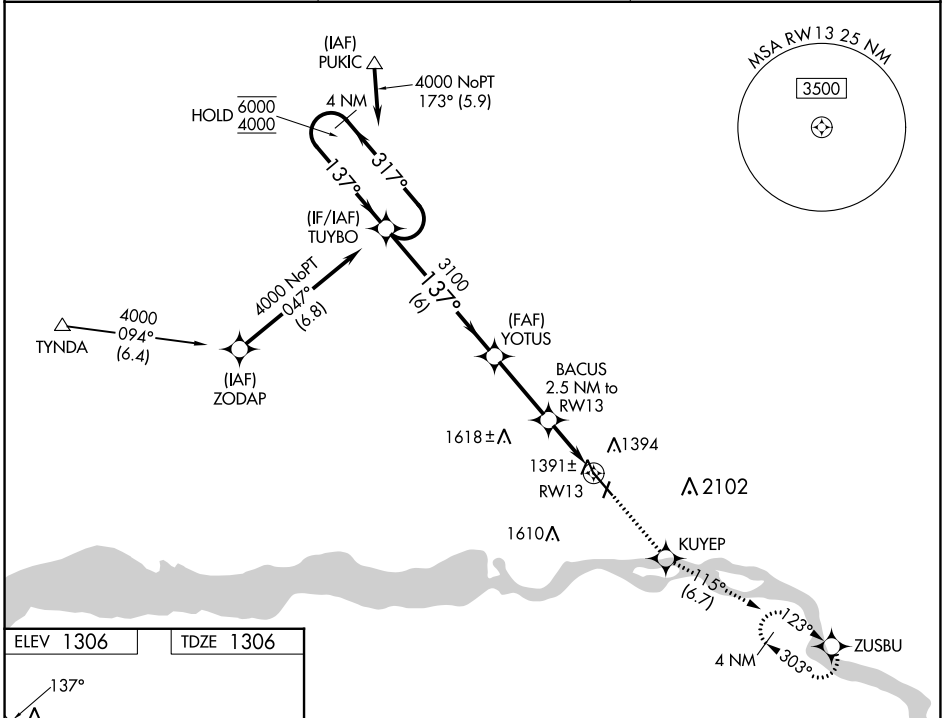
WAAS CH <b>50400</b> <b>W13A</b>	APP CRS <b>137°</b>	Rwy Idg TDZE <b>1306</b> Apt Elev <b>1306</b>	<b>6094</b>
--	------------------------	---	-------------

# RNAV (GPS) RWY 13

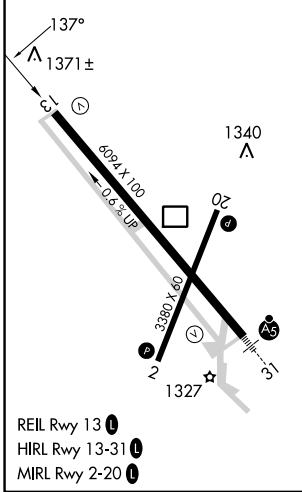
CHAN GURNEY MUNI (YKN)

RNP APCH - GPS.	MISSED APPROACH: Climb to 4000 direct KUYEP and on track 115° to ZUSBU and hold, continue climb-in-hold to 4000.
<p>⚠ Circling NA east of Rwy 20 and northeast of Rwy 31.          ⚠ Rwy 13 helicopter visibility reduction below 3/4 SM NA.</p>	

AWOS-3PT <b>119.05</b>	MINNEAPOLIS CENTER <b>125.025 235.625</b>	UNICOM <b>122.8 (CTAF)</b>
---------------------------	--	-------------------------------



ELEV 1306	TDZE 1306
-----------	-----------



VGSI and RNAV glidepath not coincident (VGSI Angle 3.00/TCH 41).				
4 NM Holding Pattern	TUYBO	YOTUS	KUYEP	ZUSBU
6000 4000	3100	3100	2140	tr 115°
GP 3.00° TCH 45	3100	2140	1 NM to RWY 13	
	6 NM	3 NM	1.5 NM	1 NM
CATEGORY	A	B	C	D
LPV DA		1556-3/4	250 (300-3/4)	
LNAV MDA		1660-1	354 (400-1)	
<input checked="" type="checkbox"/> CIRCLING	1760-1 454 (500-1)	1780-1 474 (500-1)	1980-2 674 (700-2)	1980-2 1/4 674 (700-2 1/4)

NC-1, 22 FEB 2024 to 21 MAR 2024

NC-1, 22 FEB 2024 to 21 MAR 2024

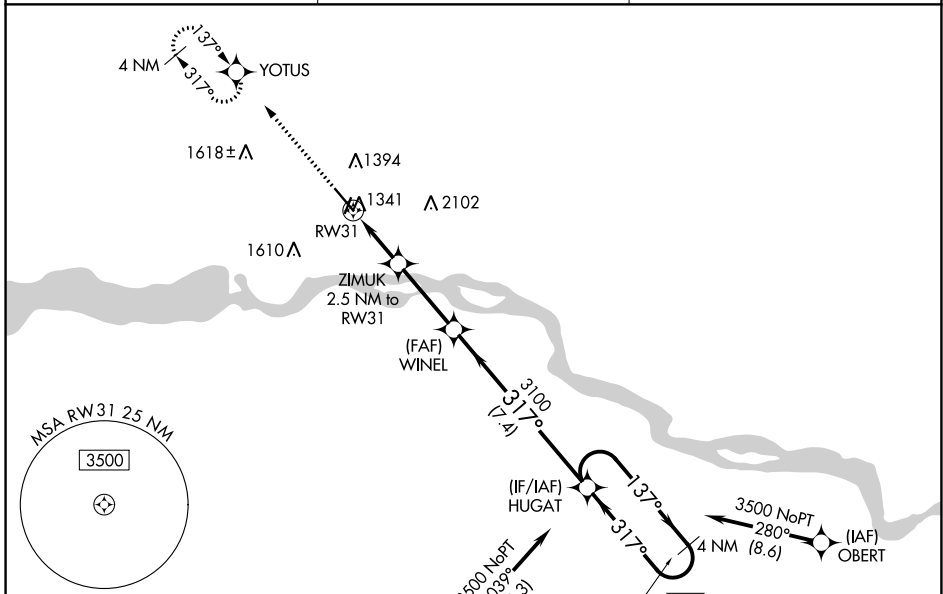
WAAS CH <b>50521</b> <b>W31A</b>	APP CRS <b>317°</b>	Rwy Idg TDZE Apt Elev	<b>6094</b> <b>1285</b> <b>1306</b>
--	------------------------	-----------------------------	---

# RNAV (GPS) RWY 31

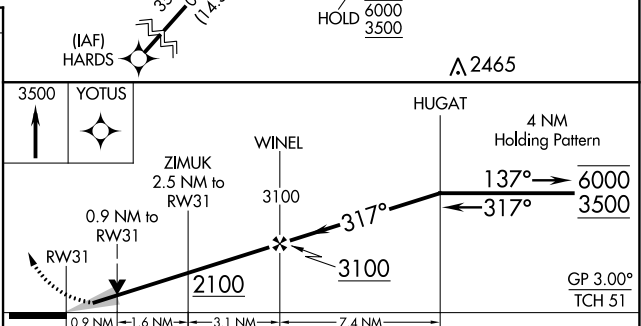
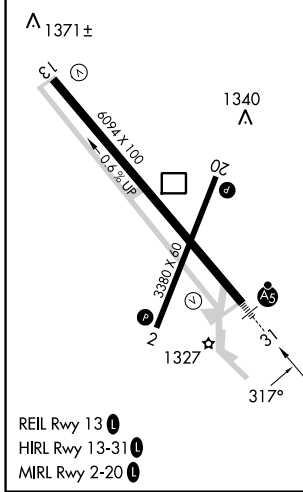
CHAN GURNEY MUNI (YKN)

RNP APCH - GPS.	MALSR	MISSED APPROACH: Climb to 3500 direct YOTUS and hold, continue climb-in-hold to 3500.
<p><b>⚠</b> Circling NA east of Rwy 20 and northeast of Rwy 31. For uncompensated Baro-VNAV systems, LNAV/VNAV NA below -21°C or above 54°C. For inop ALS increase LPV and LNAV/VNAV all Cats visibility to ½ SM and LNAV visibility all Cats to 1 SM.</p>		

AWOS-3PT <b>119.05</b>	MINNEAPOLIS CENTER <b>125.025 235.625</b>	UNICOM <b>122.8 (CTAF)</b>
---------------------------	--	-------------------------------



ELEV 1306	TDZE 1285
-----------	-----------



CATEGORY	A		B	C	D
	LPV DA	1485-½		200 (200-½)	
LNAV/VNAV DA	1535-½		250 (300-½)		
LNAV MDA	1600-½		315 (300-½)		
<b>C</b> CIRCLING	1760-1 454 (500-1)	1780-1 474 (500-1)	1980-2 674 (700-2)	1980-2¼ 674 (700-2¼)	

NC-1, 22 FEB 2024 to 21 MAR 2024

NC-1, 22 FEB 2024 to 21 MAR 2024