

RNAV (GPS) RWY 34

BAKERSFIELD MUNI (L45)

APP CRS 341°	Rwy Idg 4000
	TDZE 377
	Apt Elev 378

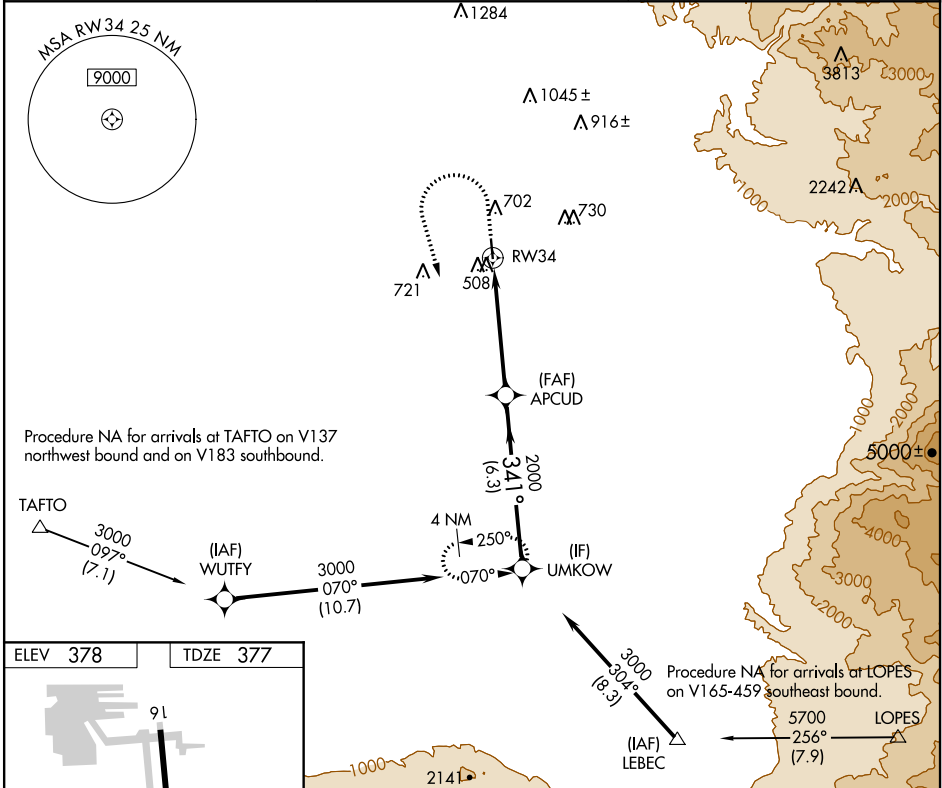
NA DME/DME RNP-0.3 NA. Use Meadows Fld altimeter setting. When Meadows Fld altimeter setting not received, use Porterville altimeter setting and increase all MDA 80 feet, increase LNAV and Circling Cat C and D visibility ¼ mile. Helicopter visibility reduction below ¾ SM NA. Night Landing Rwy 16 NA.

MISSED APPROACH: Climb to 1200 then climbing left turn to 3000 direct UMKOW and hold.

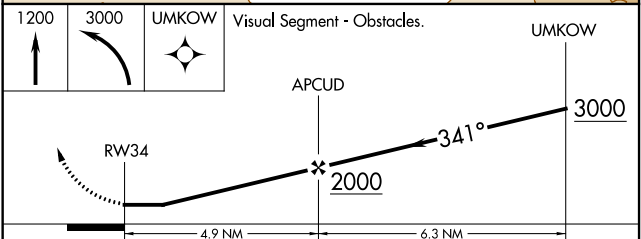
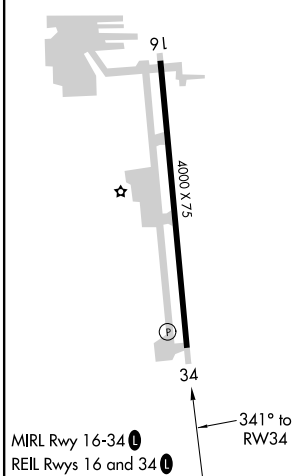
BFL ASOS
118.6

BAKERSFIELD APP CON *
126.45 270.3

UNICOM
122.8 (CTAF) 0



ELEV 378 TDZE 377



CATEGORY	A	B	C	D
LNAV MDA	840-1	463 (500-1)	840-1 3/8	463 (500-1 3/8)
C CIRCLING	1060-1	682 (700-1)	1120-2 1/4 742 (800-2 1/4)	1120-2 1/2 742 (800-2 1/2)

SW-3, 17 JUN 2021 to 15 JUL 2021

SW-3, 17 JUN 2021 to 15 JUL 2021

VORTAC EHF 115.4 Chan 101	APP CRS 319°	Rwy Idg TDZE Apt Elev	4000 377 378
---	------------------------	-----------------------------	---

VOR/DME RWY 34

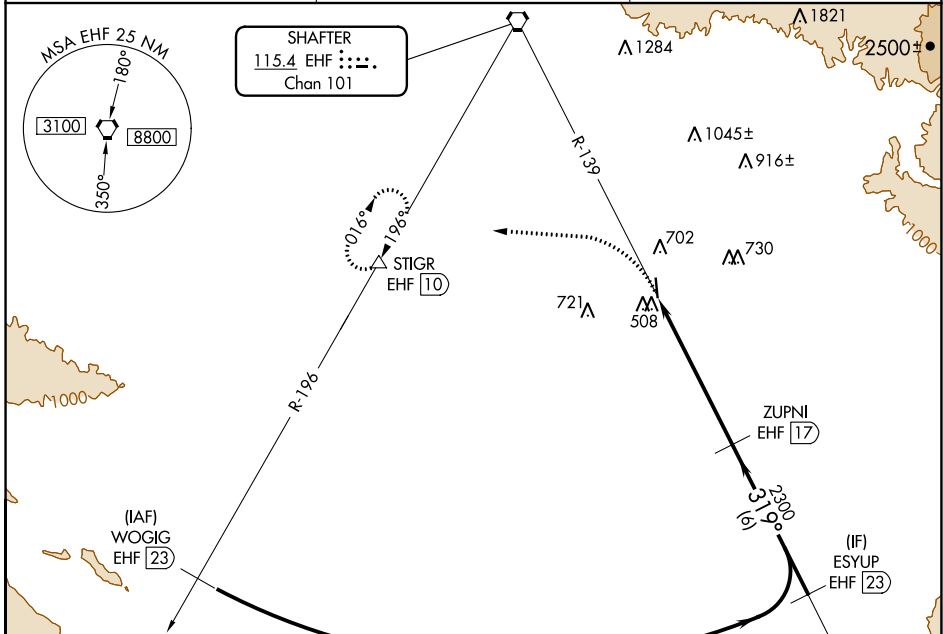
BAKERSFIELD MUNI (L45)

▼ Use Meadows fld altimeter setting. When Meadows fld altimeter setting not received, use Porterville altimeter setting and increase all MDA 80 feet, increase S-34 and Circling Cat C and D visibility ¼ mile. Visibility reduction by helicopters below ¾ SM NA. Night Landing Rwy 16 NA.

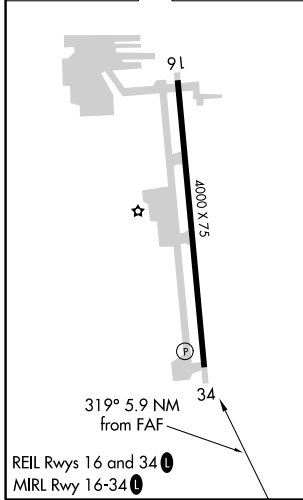
▲ NA

MISSED APPROACH: Climbing left turn to 3000 on heading 260° to EHF R-196 to STIGR/EHF 10 DME and hold, continue climb-in-hold to 3000.

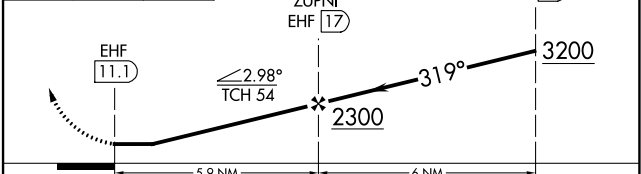
BFL ASOS 118.6	BAKERSFIELD APP CON★ 126.45 270.3	UNICOM 122.8 (CTAF) 0
--------------------------	---	---------------------------------



ELEV 378	TDZE 377
-----------------	-----------------



3000 hdg 260° EHF R-196 STIGR △ VGS1 and descent angles not coincident (VGS1 Angle 4.10/TCH 53).



CATEGORY	A	B	C	D
S-34	900-1	523 (600-1)	900-1½	523 (600-1½)
C CIRCLING	1060-1	682 (700-1)	1120-2¼ 742 (800-2¼)	1120-2½ 742 (800-2½)

SW-3, 17 JUN 2021 to 15 JUL 2021

SW-3, 17 JUN 2021 to 15 JUL 2021