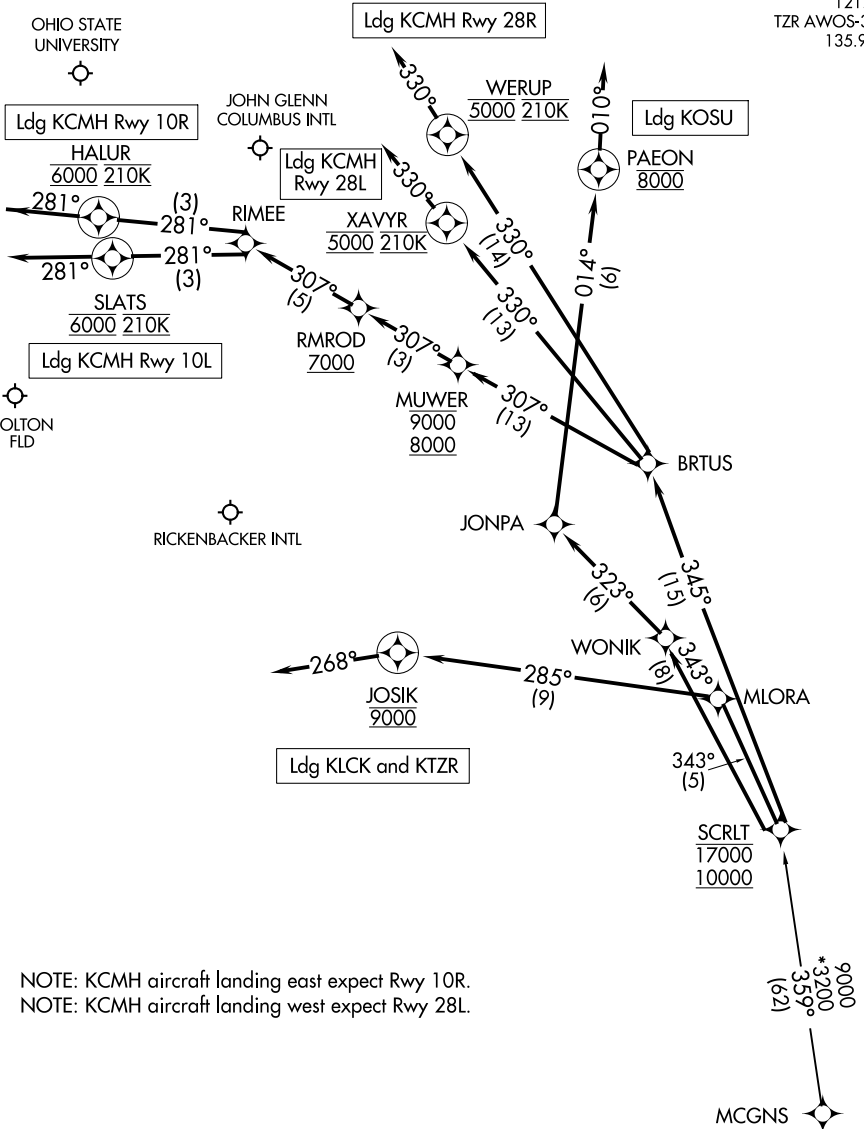


SCRLT ONE ARRIVAL (RNAV)

COLUMBUS, OHIO

RNAV 1 - DME/DME/IRU or GPS.
RADAR required.

COLUMBUS APP CON 134.0
 CMH D-ATIS 124.6
 LCK ATIS 132.75
 OSU ATIS 121.35
 TZR AWOS-3PT 135.925



EC-2, 22 FEB 2024 to 21 MAR 2024

EC-2, 22 FEB 2024 to 21 MAR 2024

NOTE: KCMH aircraft landing east expect Rwy 10R.
 NOTE: KCMH aircraft landing west expect Rwy 28L.

(NARRATIVE ON FOLLOWING PAGE)

NOTE: Chart not to scale.

SCRLT ONE ARRIVAL (RNAV)

COLUMBUS, OHIO

SCRLT ONE ARRIVAL (RNAV)

COLUMBUS, OHIO

ARRIVAL ROUTE DESCRIPTION

MCGNS TRANSITION (MCGNS.SCRLT1)

KCMH: from SCRLT on track 345° to BRTUS.

LANDING KCMH RUNWAY 10L: From BRTUS on track 307° to cross MUWER between 8000 and 9000, then on track 307° to cross RMROD at or above 7000, then on track 307° to RIMEE, then on track 281° to cross SLATS at 6000 and at 210K, then on track 281°. Expect RADAR vectors to final approach course.

LANDING KCMH RUNWAY 10R: From BRTUS on track 307° to cross MUWER between 8000 and 9000, then on track 307° to cross RMROD at or above 7000, then on track 307° to RIMEE, then on track 281° to cross HALUR at 6000 and at 210K, then on track 281°. Expect RADAR vectors to final approach course.

LANDING KCMH RUNWAY 28L: From BRTUS on track 330° to cross XAVYR at 5000 and at 210K, then on track 330°. Expect RADAR vectors to ILS or LOC Rwy 28L approach.

LANDING KCMH RUNWAY 28R: From BRTUS on track 330° to cross WERUP at 5000 and at 210K, then on track 330°. Expect RADAR vectors to ILS or LOC Rwy 28R approach.

LANDING KTZR/KLCK: From SCRLT on track 343° to MLORA, then on track 285° to cross JOSIK at 9000, then on track 268°. Expect RADAR vectors to final approach course.

LANDING KOSU: From SCRLT on track 343° to WONIK, then on track 323° to JONPA, then on track 014° cross PAEON at 8000, then on track 010°. Expect RADAR vectors to final approach course.

EC-2, 22 FEB 2024 to 21 MAR 2024

EC-2, 22 FEB 2024 to 21 MAR 2024