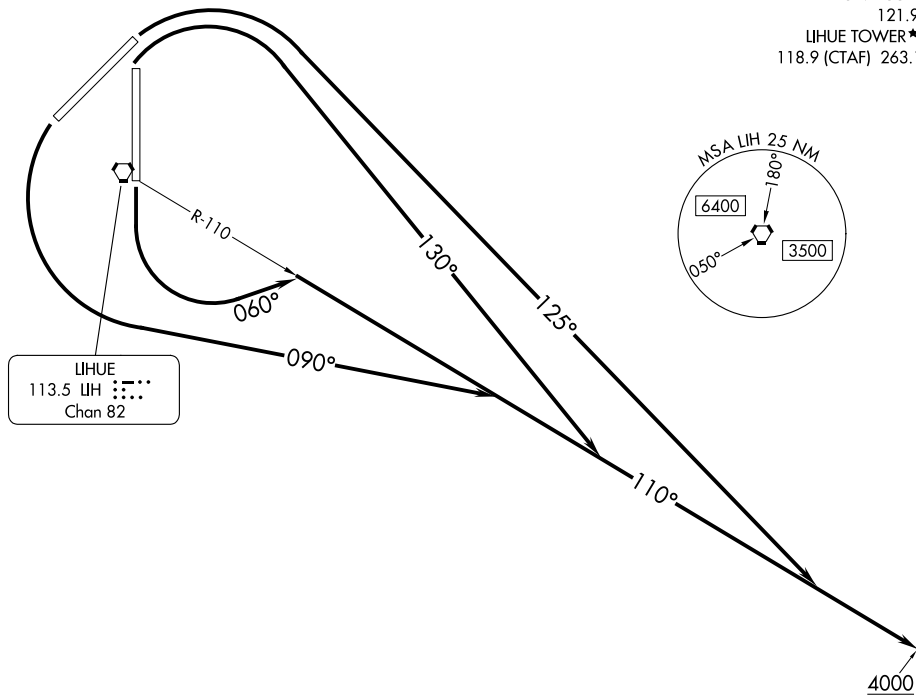
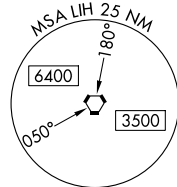


HCF CENTER  
126.5 269.4  
ATIS  
127.2  
GND CON  
121.9  
LIHUE TOWER\*  
118.9 (CTAF) 263.1



LIHUE  
113.5 LH  
Chan 82

TAKEOFF MINIMUMS

Rwys 3, 17, 35: Standard

Rwy 21: Standard with minimum climb of 720' per NM to 2100 or 4900-3 for VCOA.

NOTE: Rwy 21: Obtain ATC approval for VCOA when requesting IFR clearance. Climb in visual conditions to cross Lihue Airport at or above 4900 before proceeding on course.

NOTE: Chart not to scale.

(CONTINUED ON FOLLOWING PAGE)

DEPARTURE ROUTE DESCRIPTION

TAKEOFF RUNWAY 3: Climbing right turn to heading 125° thence. . . .

TAKEOFF RUNWAY 17: Climbing left turn to heading 060° thence. . . .

TAKEOFF RUNWAY 21: Climbing left turn to heading 090° thence. . . .

TAKEOFF RUNWAY 35: Climbing right turn to heading 130° thence. . . .

. . . . intercept LIH VORTAC R-110 eastbound to 4000 before proceeding on course.

TAKEOFF OBSTACLE NOTES

Rwy 3: Navaid 85' from DER, 418' left of centerline, 8' AGL/85' MSL.  
 Trees beginning 221' from DER, 188' right of centerline, up to 35' AGL/88' MSL.  
 Trees beginning 240' from DER, 19' right of centerline, up to 43' AGL/95' MSL.  
 Trees beginning 250' from DER, 7' left of centerline, up to 34' AGL/93' MSL.  
 Trees beginning 395' from DER, 38' left of centerline, up to 34' AGL/94' MSL.  
 Trees beginning 415' from DER, 39' left of centerline, up to 39' AGL/95' MSL.  
 Trees beginning 431' from DER, 38' left of centerline, up to 34' AGL/103' MSL.  
 Trees beginning 473' from DER, 14' left of centerline, up to 50' AGL/107' MSL.  
 Tree 541' from DER 4' right of centerline 54' AGL/103' MSL.  
 Trees beginning 548' from DER, 8' right of centerline, up to 56' AGL/104' MSL.  
 Tree 972' from DER, 676' left of centerline, 68' AGL/115' MSL.  
 Tree 1563' from DER, 538' left of centerline, 90' AGL/127' MSL.  
 Tree 1750' from DER, 783' left of centerline, 120' AGL/165' MSL.

Rwy 17: Light poles 4' from DER, 6' left of centerline, 2' AGL/94' MSL.  
 Tree 135' from DER, 272' right of centerline, 10' AGL/95' MSL.  
 Trees beginning 857' from DER, 565' right of centerline, up to 45' AGL/131' MSL.  
 Tree 1289' from DER, 734' right of centerline, 57' AGL/132' MSL.

Rwy 21: Light poles 9' from DER, 54' left of centerline, 3' AGL/154' MSL.  
 Light poles 9' from DER, 55' right of centerline, 3' AGL/155' MSL.  
 Terrain 33' from DER, 457' right of centerline, 156' MSL.  
 Pole 192' from DER, 546' left of centerline, 44' AGL/183' MSL.  
 Pole 366' from DER, 550' left of centerline, 46' AGL/184' MSL.  
 Tree, pole beginning 497' from DER, 563' left of centerline, up to 70' AGL/206' MSL.  
 Trees beginning 1148' from DER, 231' right of centerline, up to 42' AGL/203' MSL.  
 Tree 1457' from DER, 185' right of centerline, 67' AGL/212' MSL.  
 Trees beginning 1466' from DER, 53' right of centerline, up to 77' AGL/230' MSL.  
 Trees beginning 1510' from DER, 62' right of centerline, up to 87' AGL/241' MSL.  
 Tree 1536' from DER, 3' left of centerline, 70' AGL/208' MSL.  
 Tree, pole beginning 1660' from DER, 9' right of centerline, up to 96' AGL/248' MSL.  
 Trees beginning 1903' from DER, 267' left of centerline, up to 68' AGL/217' MSL.  
 Tree 2017' from DER, 280' left of centerline, 70' AGL/218' MSL.  
 Trees beginning 2029' from DER, 296' left of centerline, up to 73' AGL/221' MSL.  
 Trees beginning 2212' from DER, 337' left of centerline, up to 82' AGL/227' MSL.  
 Tree 3102' from DER, 442' left of centerline, 107' AGL/231' MSL.  
 Trees beginning 2.1 NM from DER, 2126' left of centerline, up to 3' AGL/896' MSL.  
 Tree 2.2 NM from DER, 2973' left of centerline, 25' AGL/947' MSL.  
 Trees beginning 2.2 NM from DER, 2747' left of centerline, 212' AGL/1329' MSL.  
 Tree 2.3 NM from DER, 3671' left of centerline, 2' AGL/1474' MSL.  
 Tree 2.4 NM from DER, 4032' left of centerline, 100' AGL/1488' MSL.  
 Trees beginning 2.4 NM from DER, 2595' left of centerline, 100' AGL/1488' MSL.  
 Trees beginning 2.5 NM from DER, 3483' left of centerline, up to 23' AGL/1294' MSL.

Rwy 35: Fence 40' from DER, 308' right of centerline, 13' AGL/94' MSL.  
 Tree 106' from DER, 435' right of centerline, 19' AGL/100' MSL.  
 Trees beginning 203' from DER, 379' right of centerline, up to 51' AGL/131' MSL.

PAC, 25 JAN 2024 to 21 MAR 2024

PAC, 25 JAN 2024 to 21 MAR 2024