

WAAS CH 78425 W01A	APP CRS 010°	Rwy Idg 3879 TDZE 550 Apt Elev 553
--	------------------------	---

RNAV (GPS) RWY 1

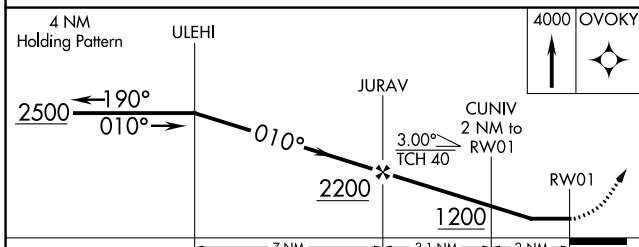
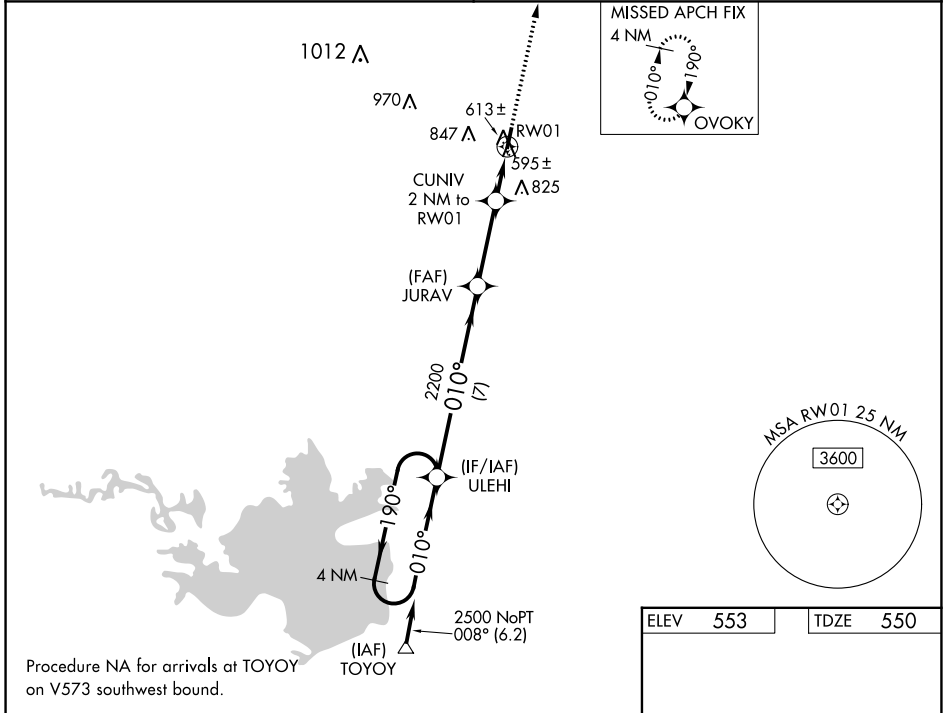
HOWARD COUNTY (M77)

RNP APCH.

▼ Procedure NA at night. Rwy 1 helicopter visibility reduction below 1 SM NA.
▲ NA Use De Queen altimeter setting; when not received, use Texarkana altimeter setting and increase all MDA 20 feet.

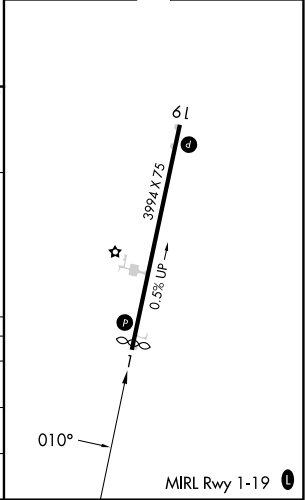
MISSED APPROACH: Climb to 4000 direct OVOKY and hold, continue climb-in-hold to 4000.

FORT WORTH CENTER 123.925 269.475	CTAF 122.9 0
---	------------------------



CATEGORY	A	B	C	D
LP MDA	940-1	390 (400-1)		NA
LNAV MDA	960-1	410 (500-1)		NA
CIRCLING	1100-1 547 (600-1)	1240-1 687 (700-1)		NA

ELEV 553	TDZE 550
----------	----------



SC-1, 22 FEB 2024 to 21 MAR 2024

SC-1, 22 FEB 2024 to 21 MAR 2024