

(TIFTO8.MCI) 23278

TIFTO EIGHT DEPARTURE

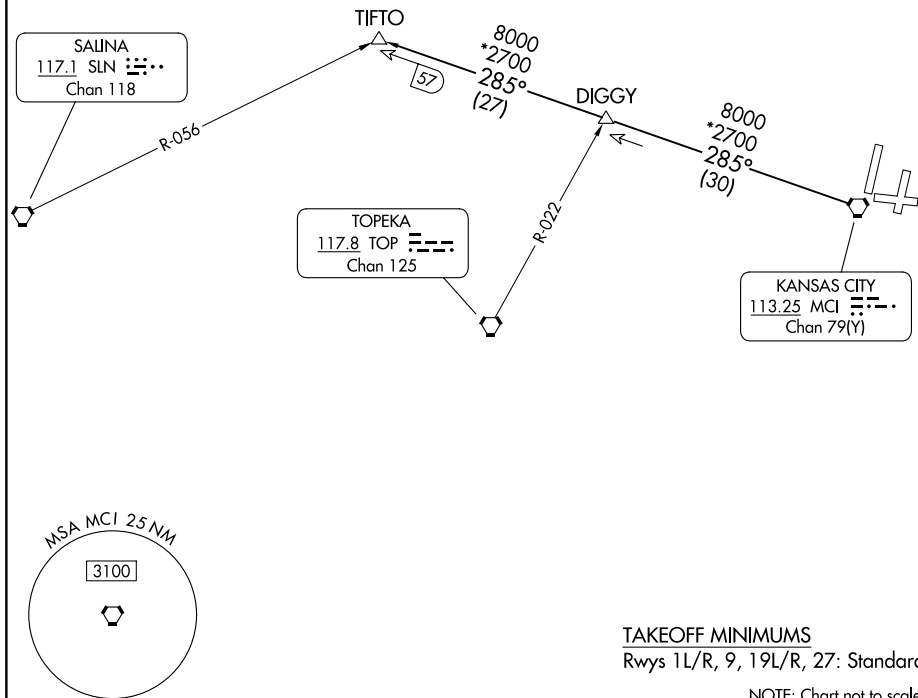
AL-780 (FAA)

KANSAS CITY INTL (MCI)
KANSAS CITY, MISSOURI

**TOP ALTITUDE:
10000**

RADAR and DME required.

KANSAS CITY DEP CON
124.7 284.7
D-ATIS
128.375
CLNC DEL
135.7



NC-3, 22 FEB 2024 to 21 MAR 2024

NC-3, 22 FEB 2024 to 21 MAR 2024

TAKEOFF MINIMUMS
Rwys 1L/R, 9, 19L/R, 27: Standard.

NOTE: Chart not to scale.



DEPARTURE ROUTE DESCRIPTION

TAKEOFF ALL RUNWAYS: Climb on assigned heading for RADAR vectors to appropriate route. Maintain 10000, expect filed altitude 10 minutes after departure.

TIFTO TRANSITION (TIFTO8.TIFTO): From over MCI VORTAC on MCI R-285 to TIFTO.

TIFTO EIGHT DEPARTURE

(TIFTO8.MCI) 05OCT23

KANSAS CITY, MISSOURI
KANSAS CITY INTL (MCI)