

JSONN FOUR ARRIVAL (RNAV) Transition Routes  
(JSONN.JSONN4) 10AUG23

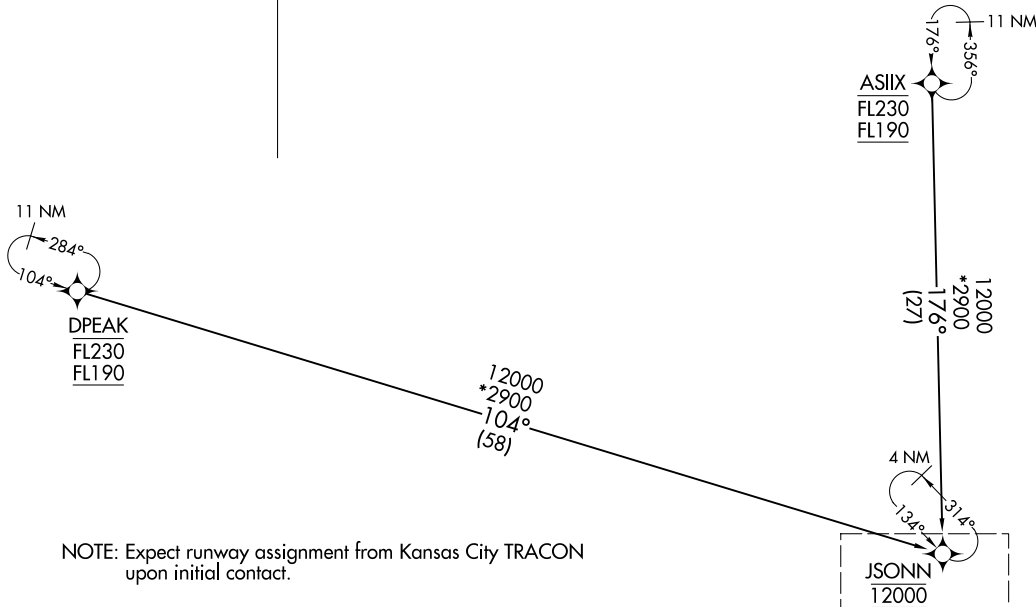
(JSONN.JSONN4) 23222  
AL-780 (FAA)  
JSONN FOUR ARRIVAL (RNAV) Transition Routes

KANSAS CITY INTL (MCI)  
KANSAS CITY, MISSOURI

KANSAS CITY APP CON  
120.95 318.1  
D-ATIS  
128.375

RNAV 1 - DME/DME/ IRU or GPS.  
RADAR required.

ASIX TRANSITION (ASIX.JSONN4)  
DPEAK TRANSITION (DPEAK.JSONN4)



NOTE: Expect runway assignment from Kansas City TRACON upon initial contact.

See following page for arrival routes

NOTE: Chart not to scale.

(CONTINUED ON FOLLOWING PAGE)

KANSAS CITY, MISSOURI  
KANSAS CITY INTL (MCI)

RNAV 1 - DME/DME/ IRU or GPS.  
RADAR required.

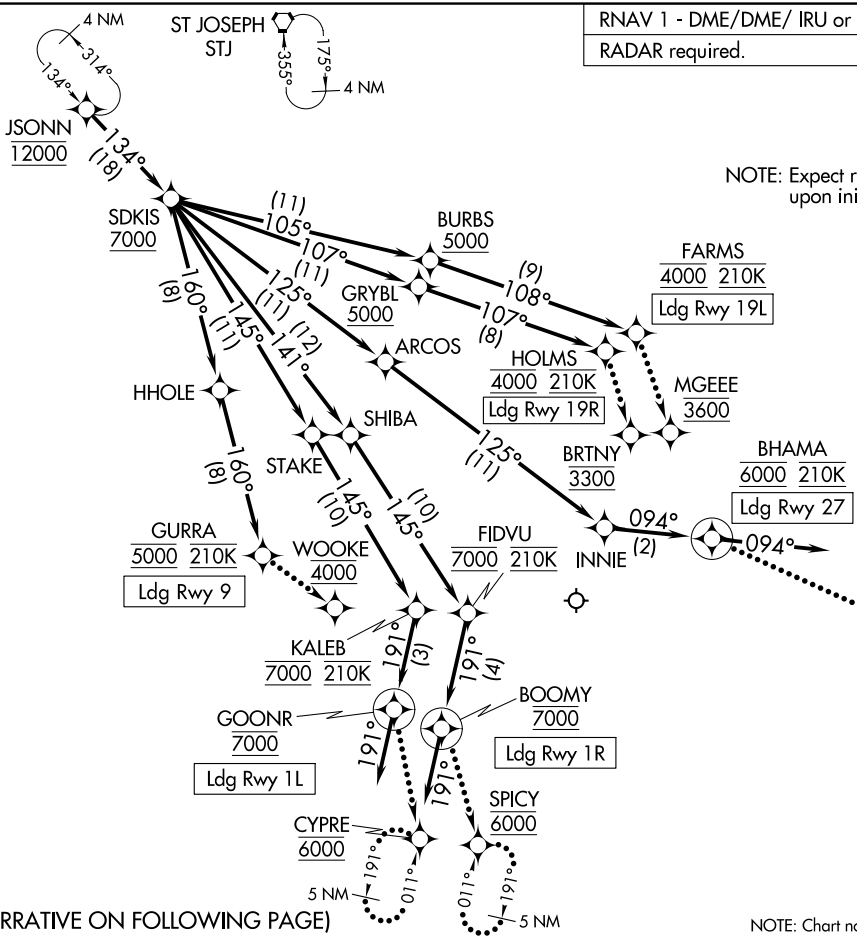
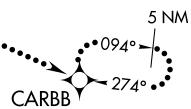
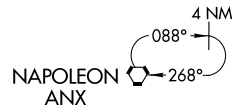
KANSAS CITY APP CON  
120.95 318.1  
D-ATIS  
128.375

(JSONN,JSONN4) 2322Z

AL-780 (FAA)

KANSAS CITY INTL (MCI)  
KANSAS CITY, MISSOURI

NOTE: Expect runway assignment from Kansas City TRACON upon initial contact.



JSONN FOUR ARRIVAL (RNAV) Arrival Routes  
(JSONN,JSONN4) 10AUG23

KANSAS CITY, MISSOURI  
KANSAS CITY INTL (MCI)

(NARRATIVE ON FOLLOWING PAGE)

NOTE: Chart not to scale.