

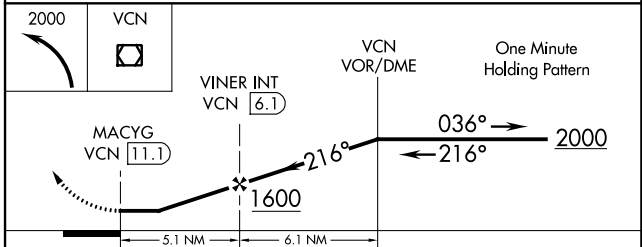
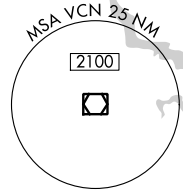
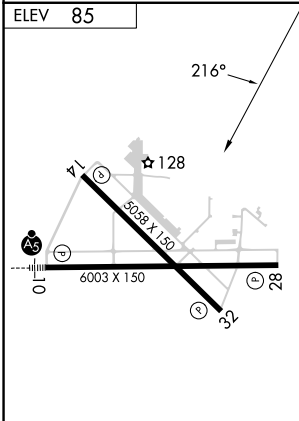
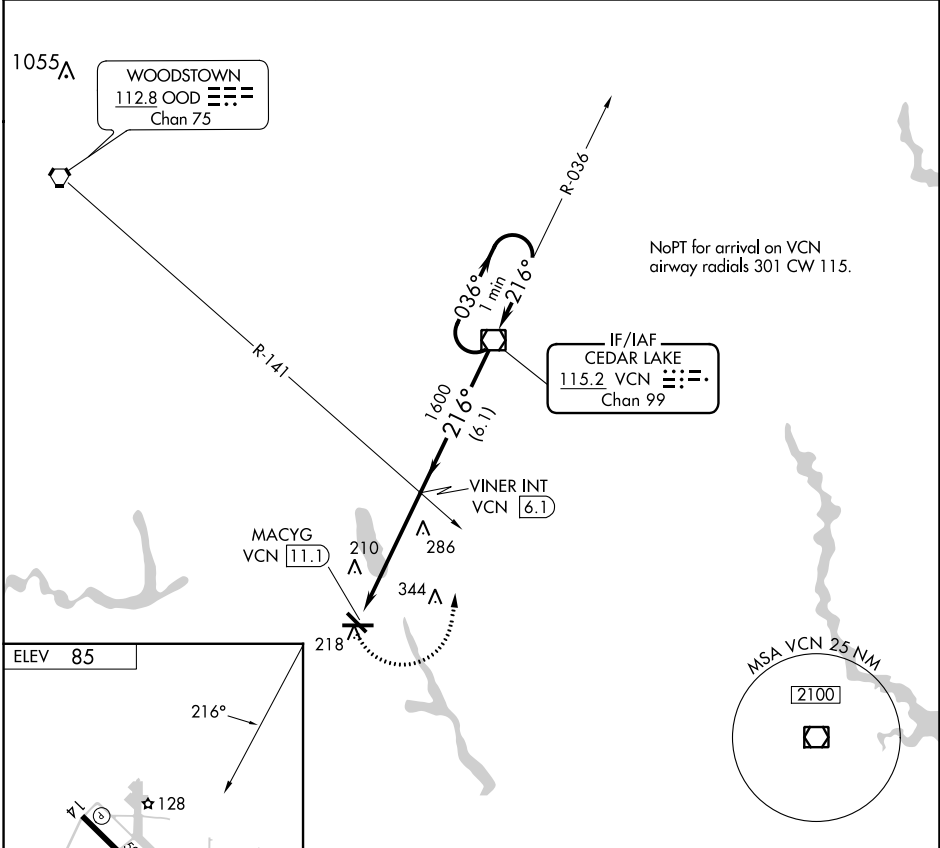
VOR/DME VCN <b>115.2</b> Chan <b>99</b>	APP CRS <b>216°</b>	Rwy Idg TDZE Apt Elev <b>N/A</b> <b>85</b>
---	------------------------	---

**VOR-A**  
MILLVILLE MUNI (MIV)

**▼** When local altimeter setting not received, use Atlantic City altimeter setting and increase all MDAs 60 feet and visibility Circling Cat C ¼ SM.

**MISSED APPROACH:** Climbing left turn to 2000 direct VCN VOR/DME and hold.

ASOS <b>119.6</b>	ATLANTIC CITY APP CON <b>124.6 327.125</b>	UNICOM <b>123.0 (CTAF) 0</b>
----------------------	---	---------------------------------



FAF to MAP 5.1 NM						
Knots	60	90	120	150	180	
Min:Sec	5:06	3:24	2:33	2:02	1:42	
CATEGORY	A		B		C	D
CIRCLING	600-1		515 (600-1)		660-1½ 575 (600-1½)	660-2 575 (600-2)

NE-2, 22 FEB 2024 to 21 MAR 2024

NE-2, 22 FEB 2024 to 21 MAR 2024