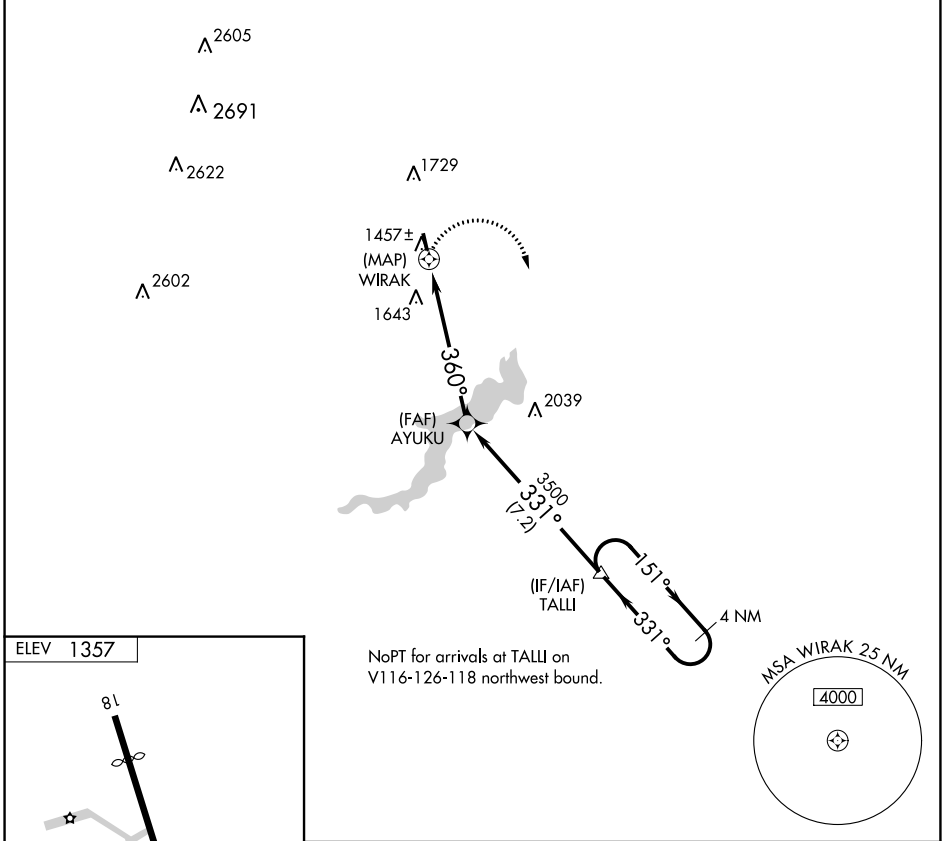


APP CRS	Rwy Idg	N/A
360°	TDZE	N/A
	Apt Elev	1357

RNAV (GPS)-B

CHERRY RIDGE (N30)

<p>▼ DME/DME RNP-0.3 NA. Procedure NA at night. Obtain local altimeter setting on CTAF; when not received, use Wilkes-Barre/Scranton Intl altimeter setting, and increase MDA 320 feet and Cat A visibility 1/4 mile.</p> <p>▲ NA</p>	<p>MISSED APPROACH: Climbing right turn to 4000 direct TALLI and hold.</p>
<p>WILKES-BARRE APP CON</p> <p>120.95 256.7</p>	<p>UNICOM</p> <p>122.8 (CTAF)</p>



NE-4, 22 FEB 2024 to 21 MAR 2024

NE-4, 22 FEB 2024 to 21 MAR 2024

