

20310

**SWOLF-NINE DEPARTURE (SWOLF9 • SWOLF)**

MIRAMAR MCAS (JOE FOSS FLD) (KNKX)  
SAN DIEGO, CALIFORNIA

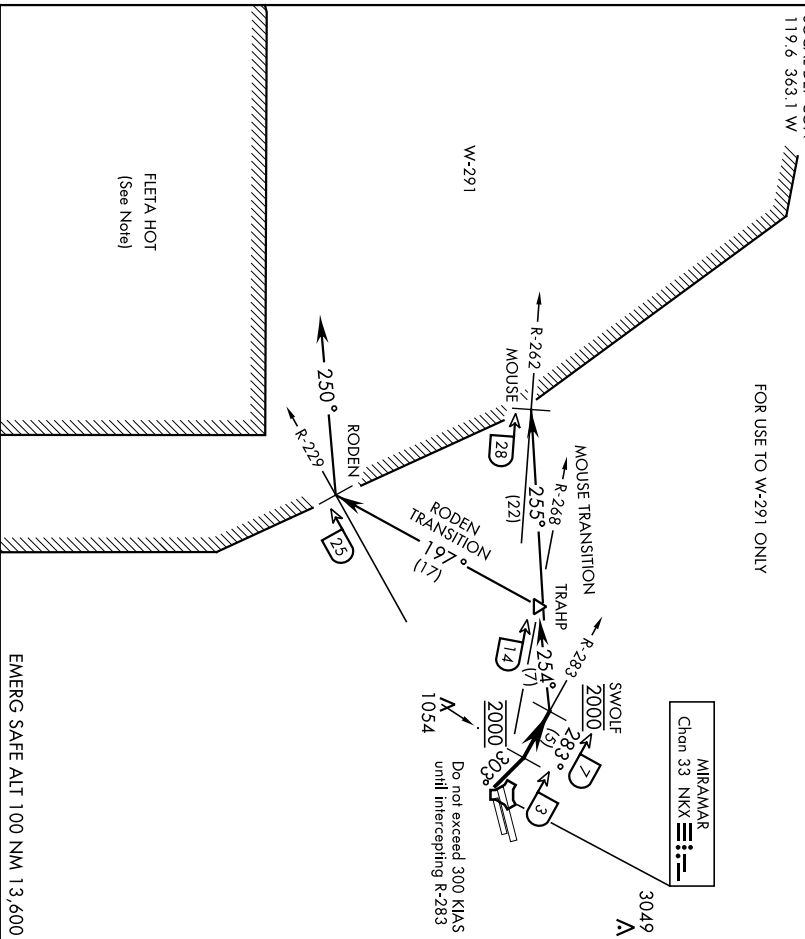
Rwy	Knots	60	120	180	240	300	360
24L/R	V/V[ft/min]	780	1560	2340	3120	3900	4680

ATC Climb Rate to 2000

ATS ★ 133.4/75 352.0  
CLNC DEL  
125.975 254.325  
GND CON  
128.625 307.325  
FOSS TOWER ★  
135.2 298.925  
SOCAL DEP CON  
119.6 363.1 W

SHL-903 [USN]

FOR USE TO W-291 ONLY



**DEPARTURE ROUTE DESCRIPTION**

TAKE-OFF RWWY 24L/R: Climbing right turn to 2000 via heading 303° to intercept and proceed via NKX TACAN R-283 to SWOLF. Complete turn within NKX 2 DME. Cross NKX R-283/3 DME at 2000 mandatory. Maintain 2000 at SWOLF mandatory. Thence...

MOUSE TRANSITION (SWOLF9 • MOUSE): Turn left heading 255° to intercept NKX R-262 at MOUSE. Maintain 2000 for entry into W-291.

(Continued on next page)

**SWOLF-NINE DEPARTURE (SWOLF9 • SWOLF)**

Orig 10OCT19

SAN DIEGO, CALIFORNIA  
MIRAMAR MCAS (JOE FOSS FLD) (KNKX)

**SWOLF-NINE DEPARTURE (SWOLF9 • SWOLF)**

MIRAMAR MCAS (JOE FOSS FLD) (KNKX)  
SAN DIEGO, CALIFORNIA

SHL-903 [USN]

**DEPARTURE ROUTE DESCRIPTION**  
(Continued)

RODEN TRANSITION (SWOLF9 • RODEN): Turn left heading 254 ° to intercept  
NKX R-268 at TRAHF. Then turn left heading 197° to intercept NKX R-229 at RODEN.  
Maintain 2000 for entry into W-291 via heading 250°.

**NOTE:**

- (1) FLETA HOT-ACTIVE FIRING AREA (DANGER, REMAIN CLEAR).
- (2) ALL AIRCRAFT SHOULD MAINTAIN LAST ASSIGNED HEADING/RADIAL  
AND ALTITUDE TO AVOID INBOUND MILITARY OR CIVIL AIRCRAFT AT  
HIGHER ALTITUDES!

**SWOLF-NINE DEPARTURE (SWOLF9 • SWOLF)**

Orig 10OCT19

SAN DIEGO, CALIFORNIA  
MIRAMAR MCAS (JOE FOSS FLD) (KNKX)