

VORTAC OCN 115.3 Chan 100	APP CRS 096°	Rwy Idg TDZE Apt Elev N/A N/A 28
---	------------------------	--

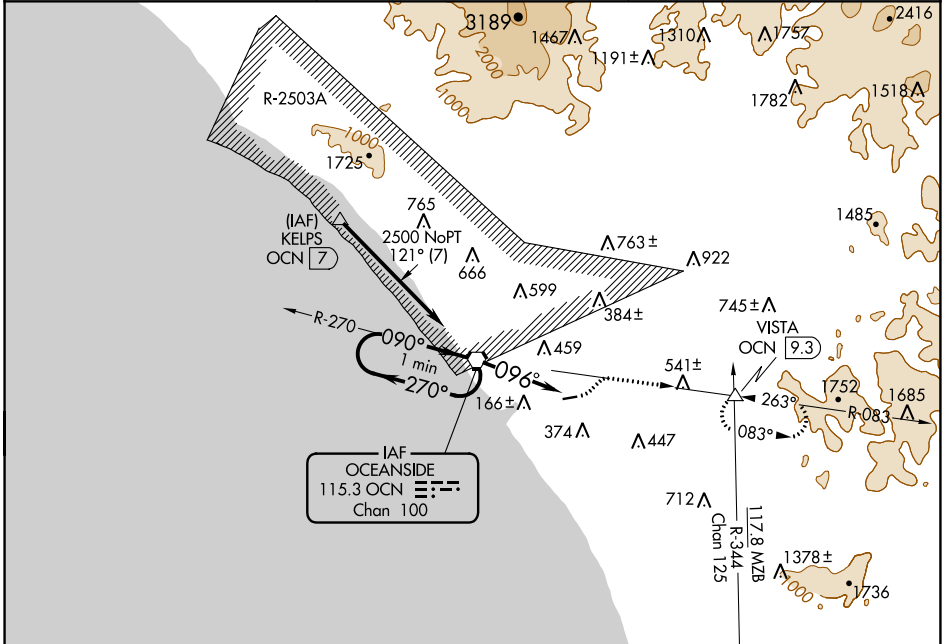
VOR-A

BOB MAXWELL MEML AIRFIELD (OKB)

⚠ Helicopter visibility reduction below 1 SM NA.
Night Landing: Rwy 6 NA.

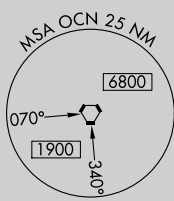
⚠ MISSED APPROACH: Climbing left turn to 4000 via heading 030° and OCN R-083 to VISTA INT/OCN 9.3 DME and hold.

ASOS 127.8	SOCAL APP CON 127.3 323.0	UNICOM 122.725 (CTAF) 📻
----------------------	-------------------------------------	--

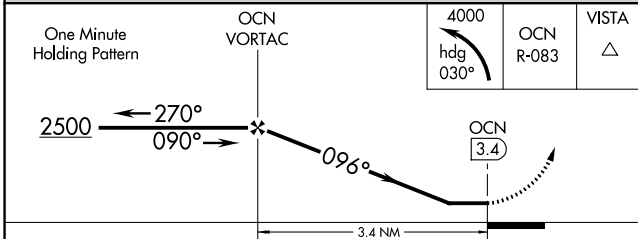
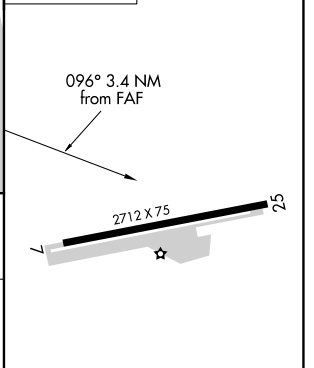


SW-3, 22 FEB 2024 to 21 MAR 2024

SW-3, 22 FEB 2024 to 21 MAR 2024



ELEV 28



MIRL Rwy 7-25 **📻**
REIL Rwy 25

CATEGORY	A	B	C	D	FAF to MAP 3.4 NM					
CIRCLING	1140-1¼ 1112 (1200-1¼)	1140-1½ 1112 (1200-1½)	NA		Knots	60	90	120	150	180
					Min:Sec	3:24	2:16	1:42	1:21	1:08

VOR-A