

GLADZ TWO DEPARTURE (RNAV)
(GLADZ2.GLADZ) 19MAY22

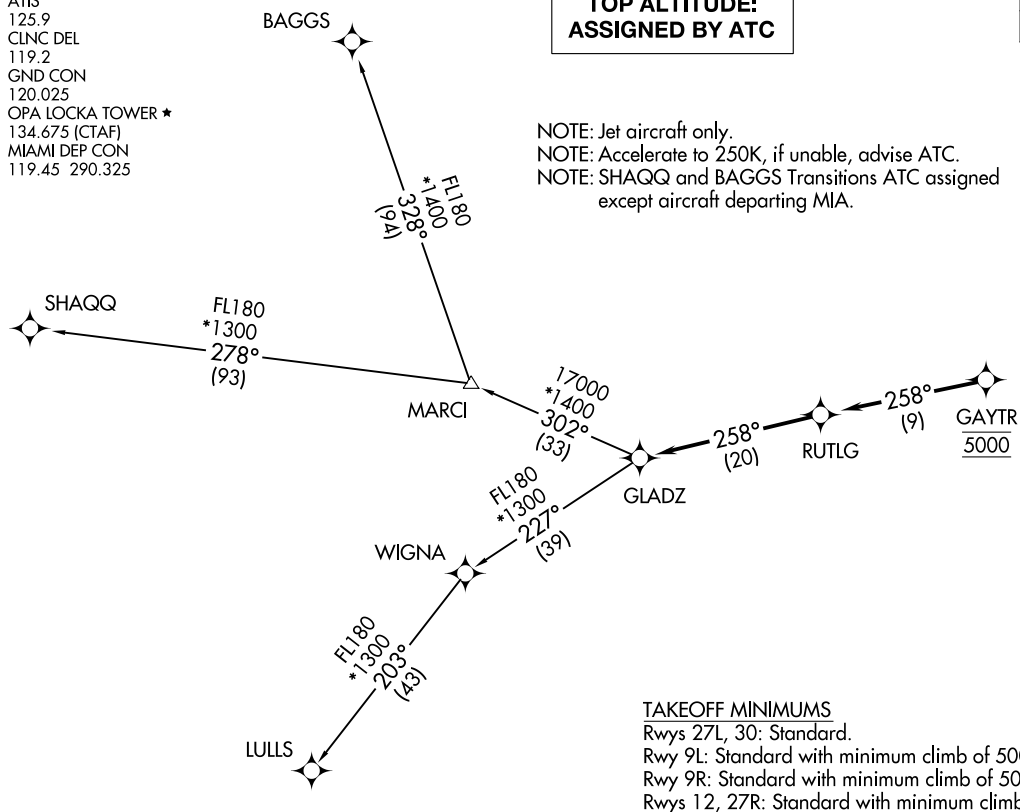
MIAMI, FLORIDA
MIAMI-OPA LOCKA EXEC (OPF)

ATIS
125.9
CLNC DEL
119.2
GND CON
120.025
OPA LOCKA TOWER ★
134.675 (CTAF)
MIAMI DEP CON
119.45 290.325

TOP ALTITUDE: ASSIGNED BY ATC

RNAV-1 DME/DME/IRU or GPS.
RADAR required.

NOTE: Jet aircraft only.
NOTE: Accelerate to 250K, if unable, advise ATC.
NOTE: SHAQQ and BAGGS Transitions ATC assigned
except aircraft departing MIA.



NOTE: Chart not to scale.

(NARRATIVE ON FOLLOWING PAGE)

(GLADZ2.GLADZ) 22139
GLADZ TWO DEPARTURE (RNAV)

AL-256 (FAA)

MIAMI-OPA LOCKA EXEC (OPF)
MIAMI, FLORIDA

	DEPARTURE ROUTE DESCRIPTION
	<div><div>TAKEOFF RUNWAYS 9L/R: Climb on heading 093° or as assigned by ATC for RADAR vectors to cross GAYTR at 5000, thence. . .</div><div>TAKEOFF RUNWAY 12: Climb on heading 128° or as assigned by ATC for RADAR vectors to cross GAYTR at 5000, thence. . .</div><div>TAKEOFF RUNWAYS 27L/R: Climb on heading 273° or as assigned by ATC for RADAR vectors to cross GAYTR at 5000, thence. . .</div><div>TAKEOFF RUNWAY 30: Climb on heading 308° or as assigned by ATC for RADAR vectors to cross GAYTR at 5000, thence. . .</div><div>. . .on track 258° to RUTLG, then on track 258° to GLADZ, then on transition. Maintain ATC assigned altitude, expect clearance to filed altitude 10 minutes after departure.</div><div>BAGGS TRANSITION (GLADZ2.BAGGS)</div><div>LULLS TRANSITION (GLADZ2.LULLS)</div><div>SHAQQ TRANSITION (GLADZ2.SHAQQ)</div></div>