

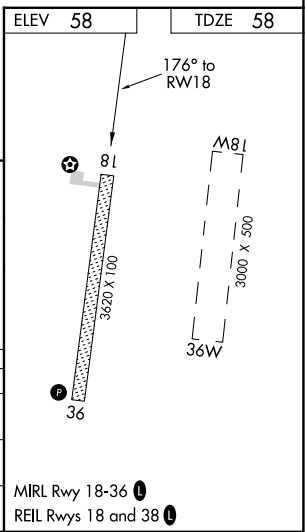
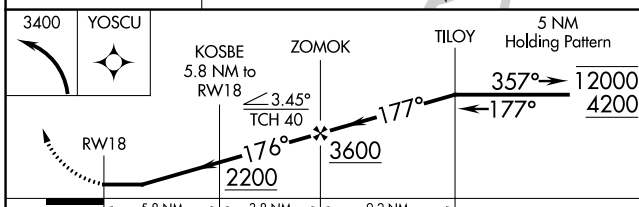
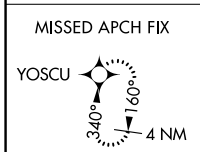
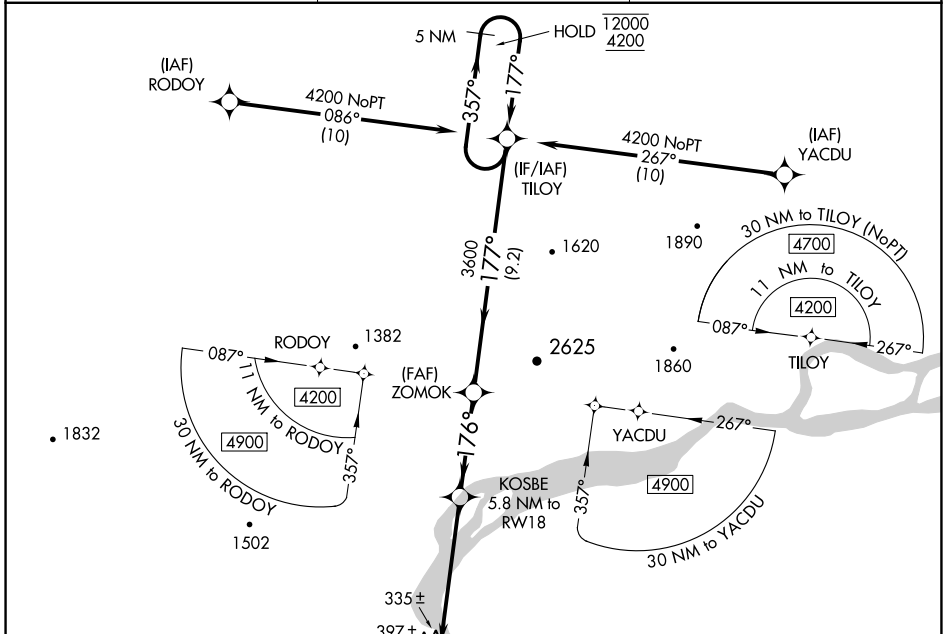
WAAS CH <b>87142</b> <b>W18A</b>	APP CRS <b>176°</b>	Rwy Idg TDZE <b>58</b> Apt Elev <b>58</b>	<b>3620</b>
--	------------------------	---	-------------

# RNAV (GPS) RWY 18

RUSSIAN MISSION (RSH)(PARS)

RNP APCH.	Rwy 18 helicopter visibility reduction below 1 SM NA. Rwy 18 Straight-in and Circling minimums NA at night.	MISSED APPROACH: Climbing left turn to 3400 direct YOSCU and hold.
-----------	--	--

AWOS-3P <b>118.375</b>	ANCHORAGE CENTER <b>118.15 251.05</b>	CTAF <b>122.9</b>
---------------------------	--	----------------------



CATEGORY	A	B	C	D
LP MDA	580-1	522 (600-1)	580-1½	522 (600-1½)
LNAV MDA	660-1	602 (700-1)	660-1¾	602 (700-1¾)
<b>C</b> CIRCLING	740-1	682 (700-1)	1120-3 1062 (1100-3)	1360-3 1302 (1400-3)

AK, 25 JAN 2024 to 21 MAR 2024

AK, 25 JAN 2024 to 21 MAR 2024

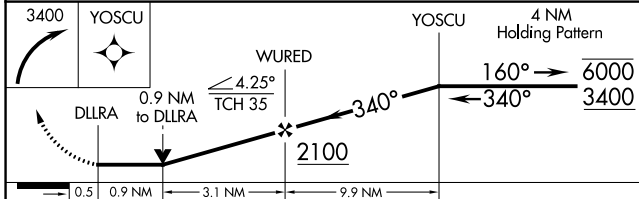
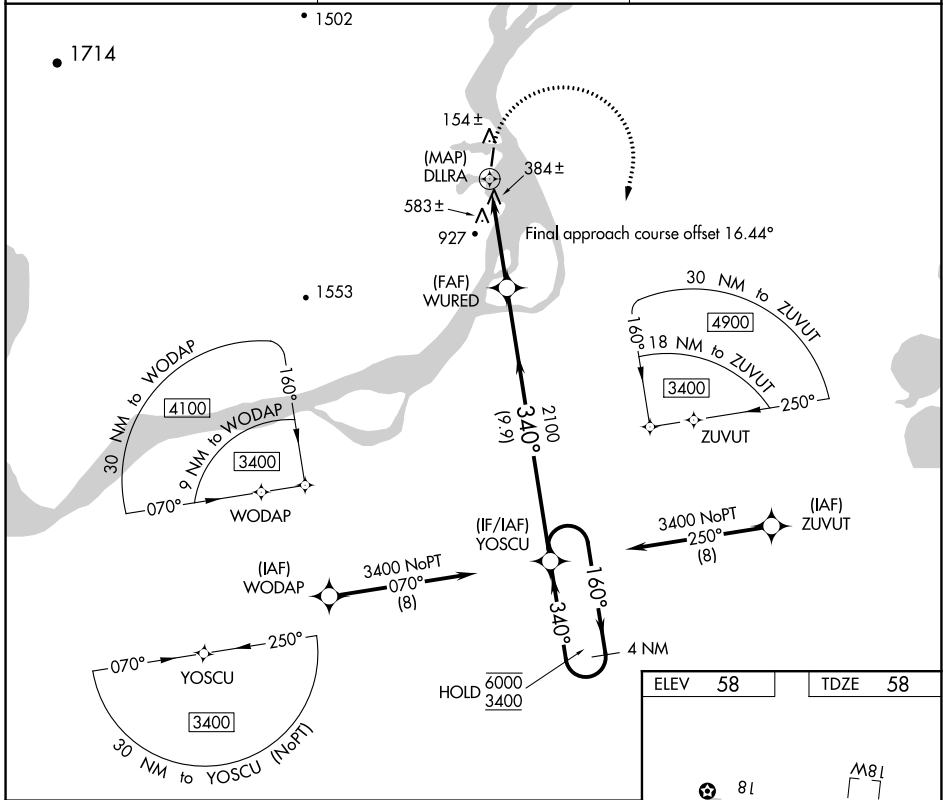
WAAS CH <b>93942</b> <b>W36A</b>	APP CRS <b>340°</b>	Rwy Idg <b>3620</b> TDZE <b>58</b> Apt Elev <b>58</b>
--	------------------------	---

# RNAV (GPS) RWY 36

RUSSIAN MISSION (RSH)(PARS)

RNP APCH. ▼ ▲ ❄️ -31°C	Circling Rwy 18 NA at night. Rwy 36 helicopter visibility reduction below ¾ SM NA.	MISSED APPROACH: Climbing right turn to 3400 direct YOSCU and hold.
---------------------------------	---	---

AWOS-3P <b>118.375</b>	ANCHORAGE CENTER <b>118.15 251.05</b>	CTAF <b>122.9 0</b>
---------------------------	--	------------------------



0.5	0.9 NM	3.1 NM	9.9 NM	
CATEGORY	A	B	C	D
LP MDA	700-1 642 (700-1)		NA	
LNAV MDA	840-1 782 (800-1)		NA	
<b>C</b> CIRCLING	840-1 782 (800-1)	840-1¼ 782 (800-1¼)	1120-3 1062 (1100-3)	1360-3 1302 (1400-3)

ELEV 58	TDZE 58
---------	---------

Diagram of Rwy 36 showing dimensions: 3620 x 100 ft runway, 3000 x 500 ft taxiway, and 36W width. The diagram also shows the M81 and 81 markers.

MIRL Rwy 18-36 0  
REIL Rwy 18 and 36 0

AK, 25 JAN 2024 to 21 MAR 2024

AK, 25 JAN 2024 to 21 MAR 2024