

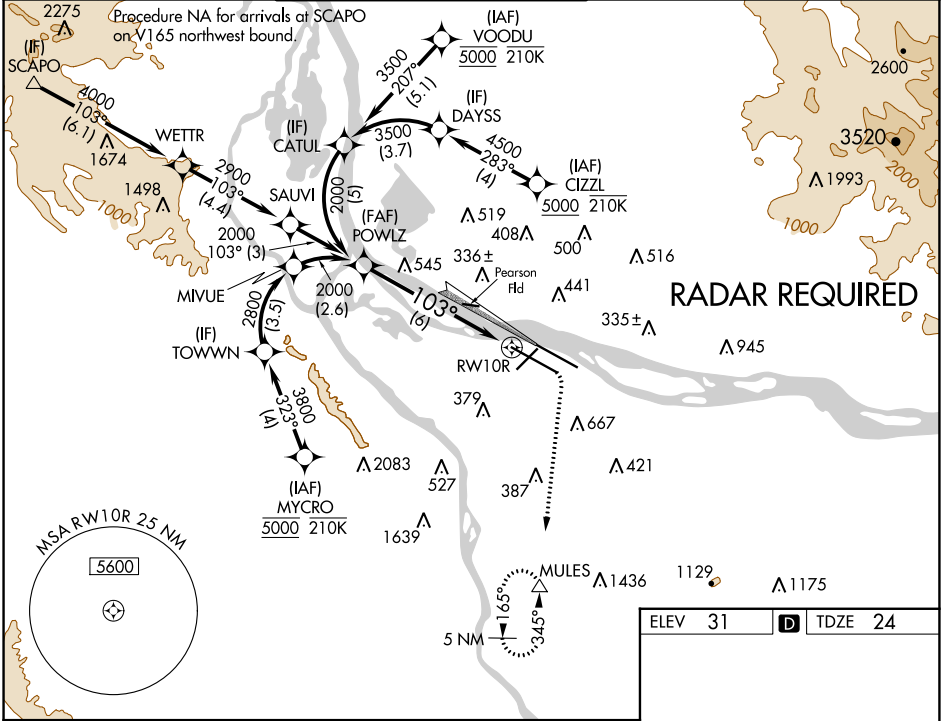
APP CRS	Rwy Idg	11000
103°	TDZE	24
	Apt Elev	31

RNAV (RNP) Z RWY 10R

PORTLAND INTL (PDX)

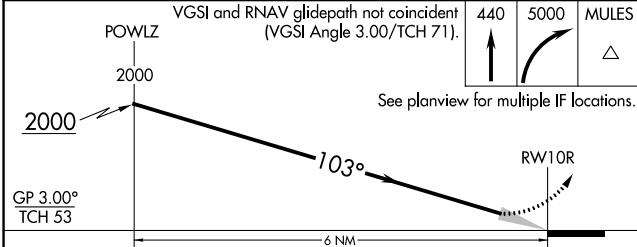
RNP AR APCH - GPS.		ALSF-2 	MISSED APPROACH: Climb to 440 then climbing right turn to 5000 direct MULES and hold, continue climb-in-hold to 5000.
Simultaneous approach authorized. For uncompensated Baro-VNAV systems, procedure NA below -15°C or above 54°C. For inop ALS, increase RNP 0.10 all Cats visibility to RVR 5500.			

D-ATIS	PORTLAND APP CON	PORTLAND TOWER	GND CON	CLNC DEL	CPDLC
128.35	124.35 299.2	Rwy 10L-28R 118.7 257.8	Rwys 3-21, 10R-28L 123.775 251.125	121.9 348.6	120.125 318.1
269.9					



NW-1, 22 FEB 2024 to 21 MAR 2024

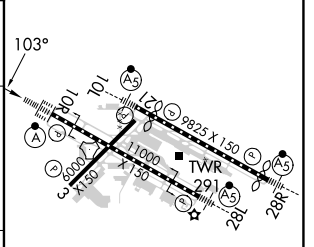
NW-1, 22 FEB 2024 to 21 MAR 2024



ELEV 31	D TDZE 24
---------	------------------

CATEGORY	A	B	C	D
RNP 0.10 DA		370/30	346 (400- $\frac{3}{8}$)	
RNP 0.30 DA		449/40	425 (500- $\frac{3}{4}$)	

AUTHORIZATION REQUIRED



REIL Rwys 3 and 21
 TDZ/CL Rwy 10R
 MRL Rwy 3-21
 HIRL Rwys 10L-28R and 10R-28L