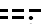



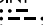
HCF CENTER
119.5 225.4
ATIS
128.6
MAUI TOWER*
118.7 279.6

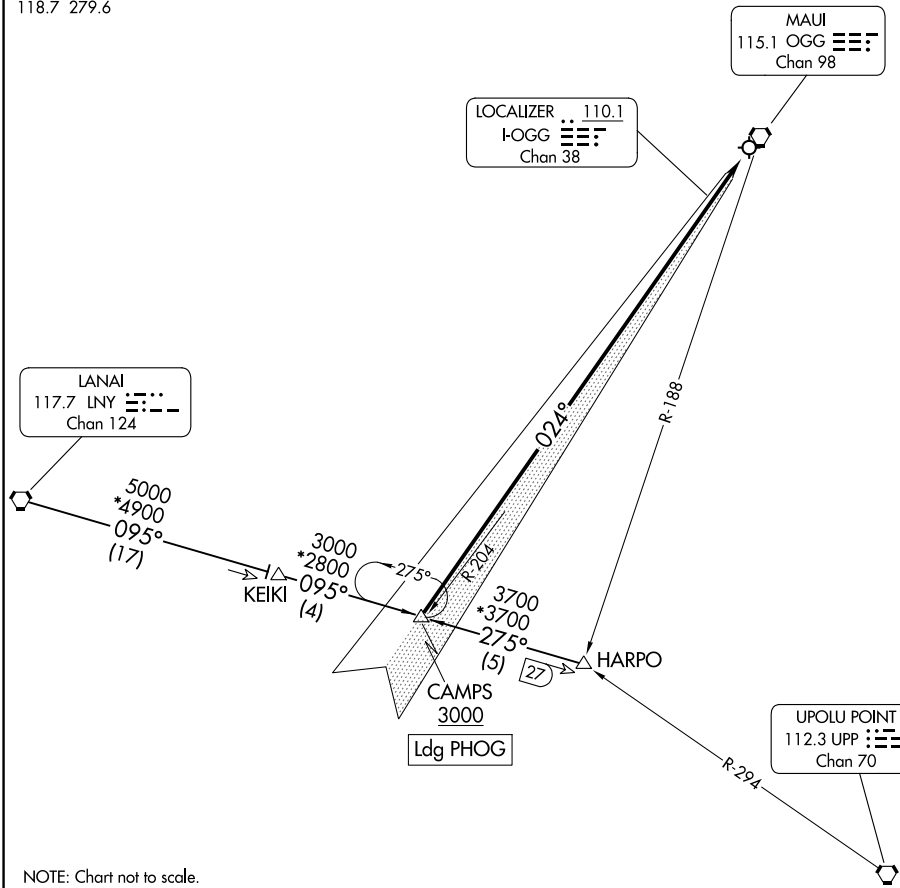
RADAR required to HARPO.
DME required for LANAI Transition.

MAUI
115.1 OGG 
Chan 98

LOCALIZER .. 110.1
I-OGG 
Chan 38

LANAI
117.7 LNY 
Chan 124

UPOLU POINT
112.3 UPP 
Chan 70



NOTE: Chart not to scale.

ARRIVAL ROUTE DESCRIPTION

HARPO TRANSITION (HARPO.CAMPS4): From over HARPO on LNY R-095 to CAMPS.
Thence

LANAI TRANSITION (LNY.CAMPS4): From over LNY VORTAC on LNY R-095 to CAMPS.
Thence

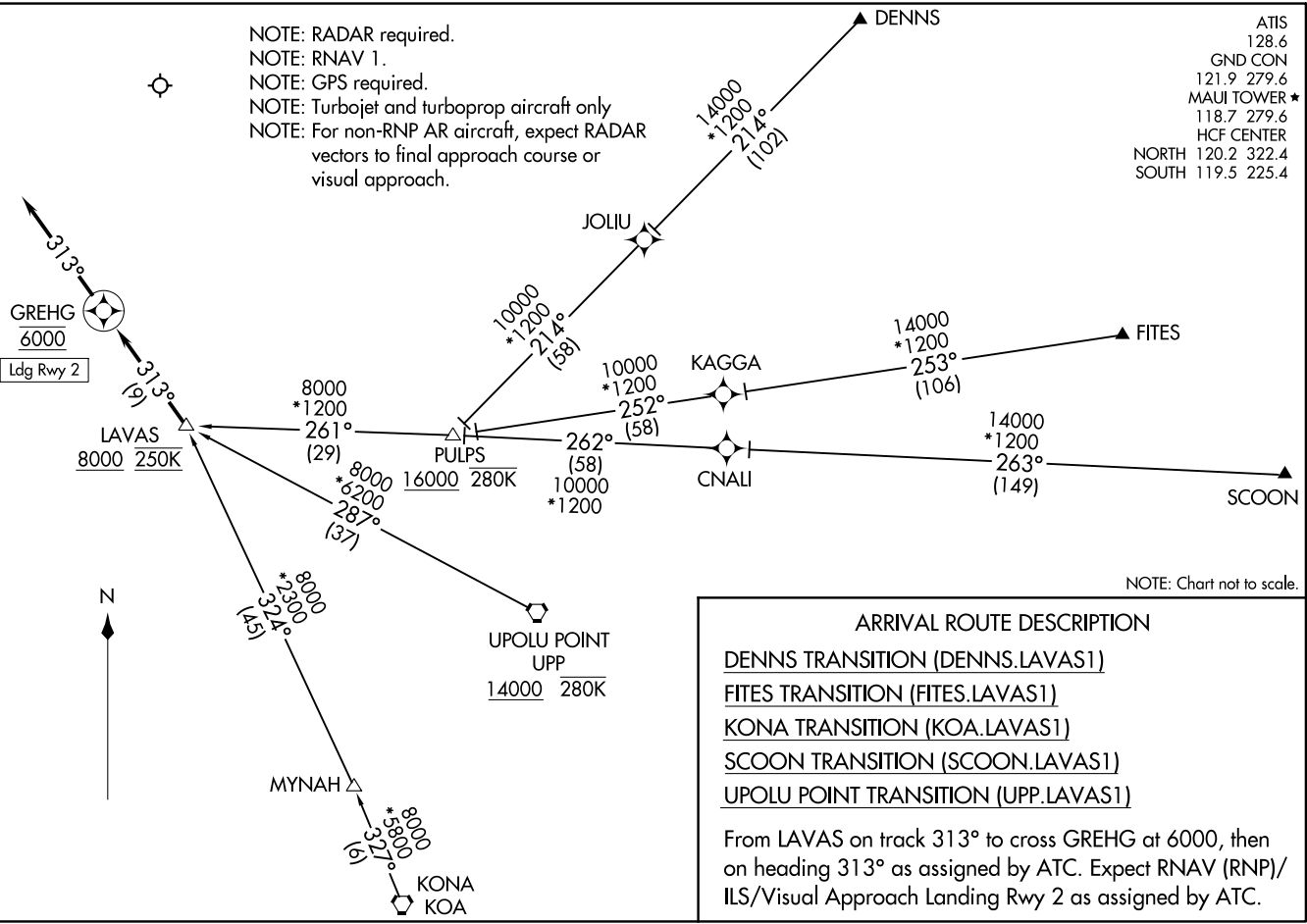
. . . . cross CAMPS at or above 3000, then on I-OGG localizer course. Expect
ILS Y or LOC Y RWY 2 approach.

LAVAS ONE ARRIVAL (RNAV)
(LAVAS.LAVAS1) 20JUN19

KAHULUI HAWAII
(OGG) (PHOG)
KAHULUI (OGG) (PHOG)

NOTE: RADAR required.
NOTE: RNAV 1.
NOTE: GPS required.
NOTE: Turbojet and turboprop aircraft only
NOTE: For non-RNP AR aircraft, expect RADAR vectors to final approach course or visual approach.

ATIS 128.6
GND CON 121.9 279.6
MAUI TOWER * 118.7 279.6
HCF CENTER
NORTH 120.2 322.4
SOUTH 119.5 225.4



NOTE: Chart not to scale.

ARRIVAL ROUTE DESCRIPTION

DENNS TRANSITION (DENNS.LAVAS1)
FITES TRANSITION (FITES.LAVAS1)
KONA TRANSITION (KOA.LAVAS1)
SCOON TRANSITION (SCOON.LAVAS1)
UPOLU POINT TRANSITION (UPP.LAVAS1)

From LAVAS on track 313° to cross GREHG at 6000, then on heading 313° as assigned by ATC. Expect RNAV (RNP)/ ILS/Visual Approach Landing Rwy 2 as assigned by ATC.

(LAVAS.LAVAS1) 19171
LAVAS ONE ARRIVAL (RNAV)

AL-762 (FAA)

KAHULUI (OGG) (PHOG)
KAHULUI HAWAII

(LNDHY.LNDHY1) 19171

LNDHY ONE ARRIVAL (RNAV)

AL-762 (FAA)

KAHULUI (OGG) (PHOG)

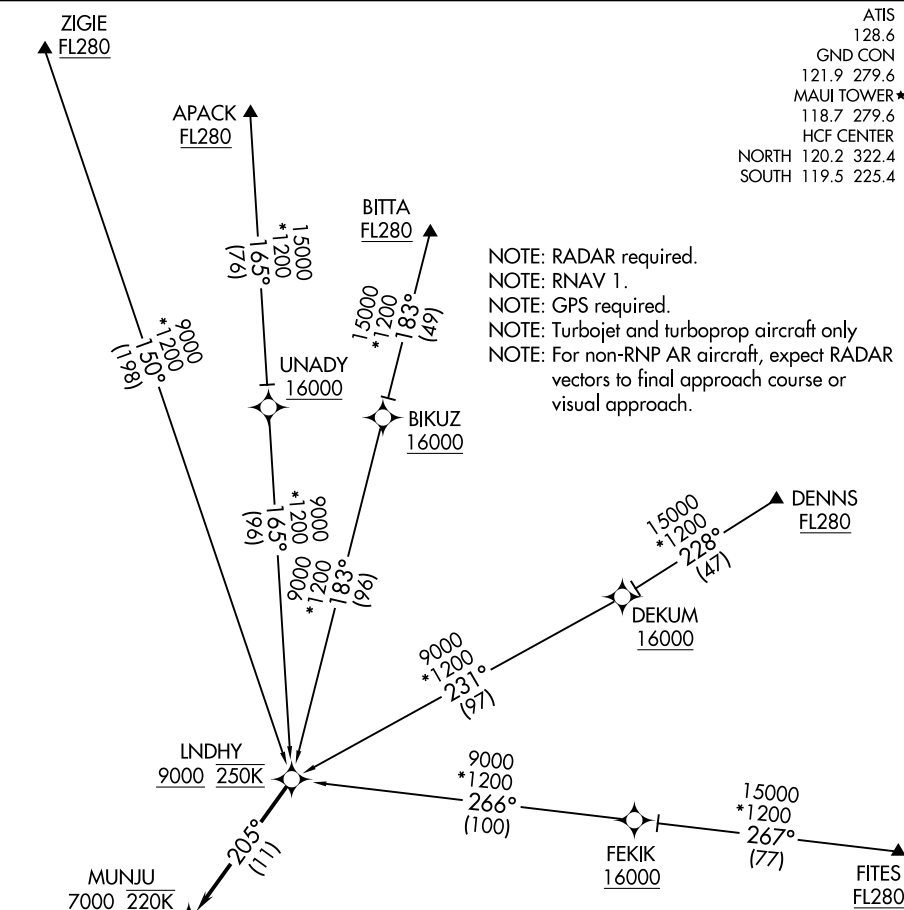
KAHULUI, HAWAII

ATIS 128.6
 GND CON 121.9 279.6
 MAUI TOWER* 118.7 279.6
 HCF CENTER
 NORTH 120.2 322.4
 SOUTH 119.5 225.4

NOTE: RADAR required.
 NOTE: RNAV 1.
 NOTE: GPS required.
 NOTE: Turbojet and turboprop aircraft only
 NOTE: For non-RNP AR aircraft, expect RADAR vectors to final approach course or visual approach.

PAC, 25 JAN 2024 to 21 MAR 2024

PAC, 25 JAN 2024 to 21 MAR 2024



ARRIVAL ROUTE DESCRIPTION

- APACK TRANSITION (APACK.LNDHY1)
- BITTA TRANSITION (BITTA.LNDHY1)
- DENNS TRANSITION (DENNS.LNDHY1)
- FITES TRANSITION (FITES.LNDHY1)
- ZIGIE TRANSITION (ZIGIE.LNDHY1)

From LNDHY on track 205° to cross MUNJU at or above 7000 and at 220K, then on track 204° to cross HOMAI at 5000 and at 210K, then on track 204° . Expect RNAV (RNP)/ILS/Visual Approach Landing Rwy 2, as assigned by ATC.

NOTE: Chart not to scale.

LNDHY ONE ARRIVAL (RNAV)

(LNDHY.LNDHY1) 20JUN19

KAHULUI, HAWAII
KAHULUI (OGG) (PHOG)