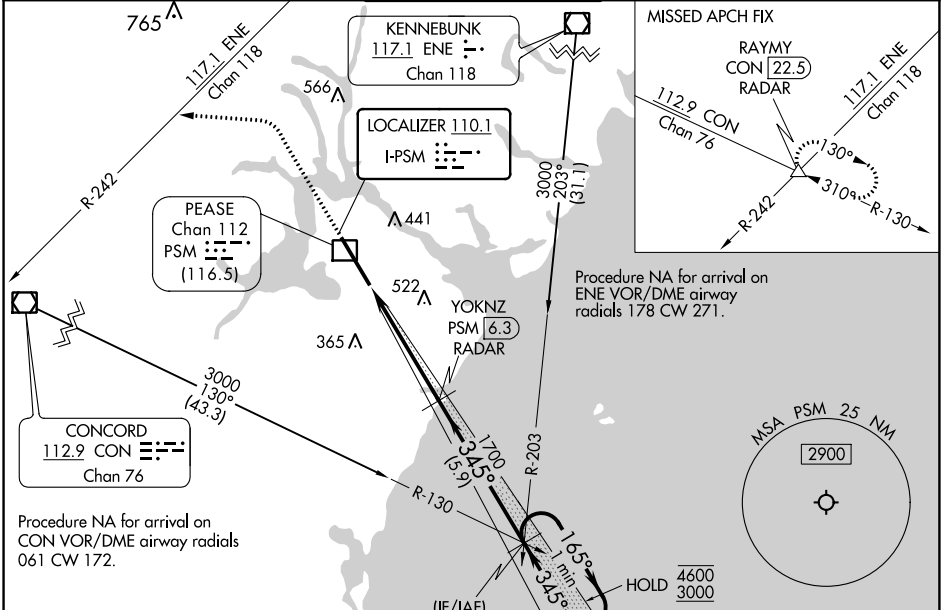


LOC I-PSM 110.1	APP CRS 345°	Rwy Idg TDZE Apt Elev	11321 84 100
---------------------------	------------------------	-----------------------------	---

ILS or LOC RWY 34

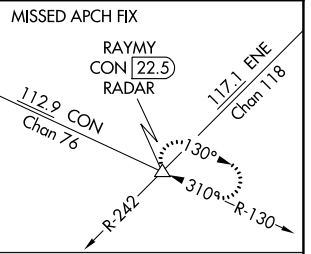
PORTSMOUTH INTL AT PEASE (PSM)

DME or RADAR required.		MALS R 	MISSED APPROACH: Climb to 1500 then dimbing left turn on heading 290° to 3000 and ENE VOR/DME R-242 to RAYMY INT/CON VOR/DME 22.5 DME/RADAR and hold.	
ATIS 132.05 273.5	BOSTON APP CON 125.05 269.4	PORTSMOUTH TOWER 128.4 269.0	GND CON 120.95 275.8	CLNC DEL 335.8

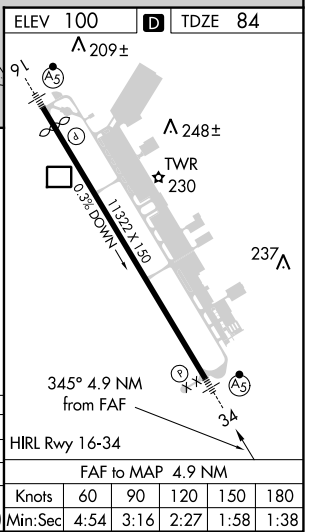
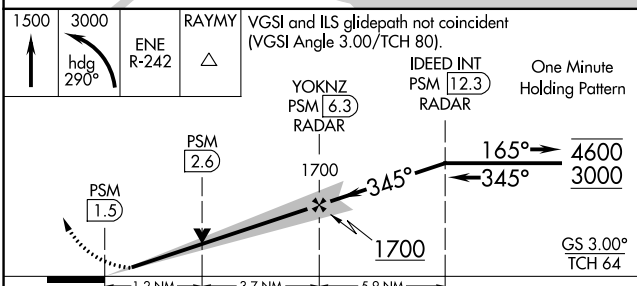


Procedure NA for arrival on CON VOR/DME airway radials 061 CW 172.

Use of CON R-130 and ENE R-203 may be necessary to locate IDEED intersection.



Procedure NA for arrival on ENE VOR/DME airway radials 178 CW 271.



CATEGORY	A	B	C	D	E	HIRL Rwy 16-34 FAF to MAP 4.9 NM
S-ILS 34	284/24 200 (200-½)					
S-LOC 34	540/24	456 (500-½)	540/45		456 (500-¾)	
CIRCLING	540-1	560-1	680-1½	780-2¼	800-2½	Knots: 60 90 120 150 180 Min:Sec: 4:54 3:16 2:27 1:58 1:38
	440 (500-1)	460 (500-1)	580 (600-1½)	680 (700-2¼)	700 (700-2½)	

NE-1, 22 FEB 2024 to 21 MAR 2024

NE-1, 22 FEB 2024 to 21 MAR 2024