

WAAS CH 86738 W07A	APP CRS 075°	Rwy Idg TDZE Apt Elev	3502 8 8
----------------------------------------	------------------------	-----------------------------	-------------------------------------

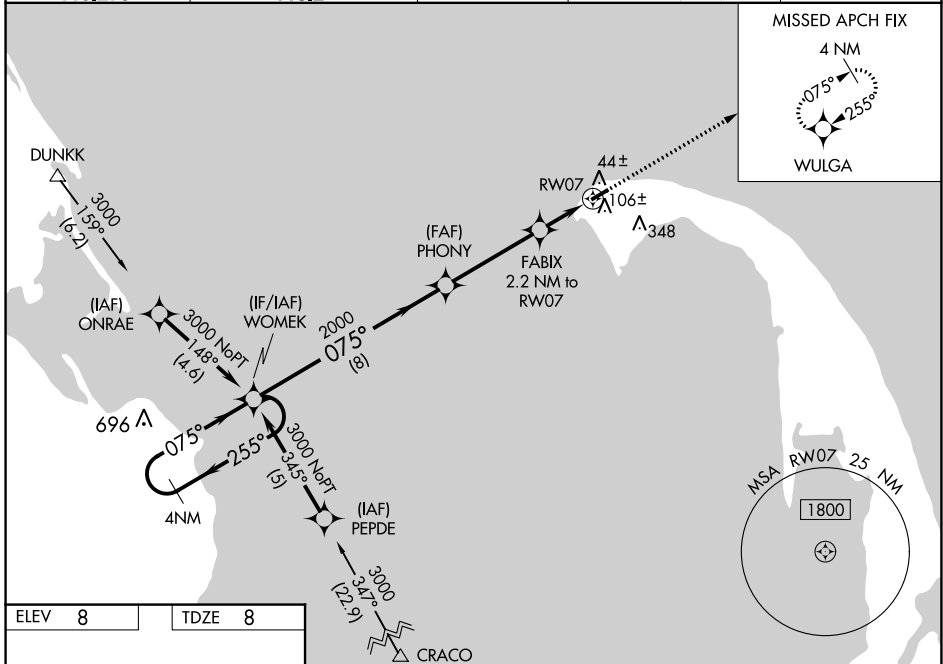
RNAV (GPS) RWY 7

PROVINCETOWN MUNI (PVC)

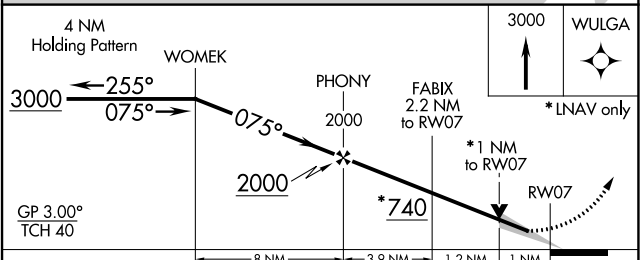
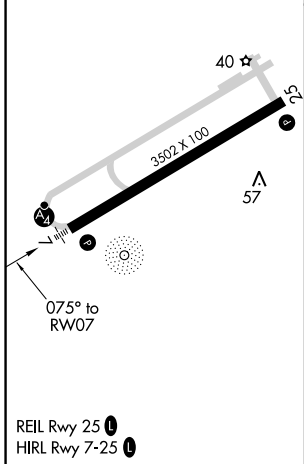
⚠ For uncompensated Baro-VNAV systems, LNAV/VNAV NA below -15°C (5°F) or above 54°C (130°F). DME/DME RNP-0.3 NA. Inop table does not apply to LPV Cats A and B. When local altimeter setting not received, use Hyannis altimeter setting: increase LPV DA to 271, increase LNAV/VNAV DA to 331, and Cat A/B visibility 1/8 mile and all MDA 80 feet. For inop MALSF when using Hyannis altimeter setting, increase LPV Cat A/B visibility to 7/8 mile. Baro-VNAV and VDP NA when using Hyannis altimeter setting.

MALSF
MISSED APPROACH:
Climb to 3000 direct WULGA and hold.

AWOS-3PT 119.275	BOSTON APP CON ★ 118.2	CLNC DEL 120.65	UNICOM 122.8 (CTAF)	122.85 📶
----------------------------	----------------------------------	---------------------------	-------------------------------	------------------------



ELEV 8	TDZE 8
---------------	---------------



CATEGORY	A		B		C		D	
	LPV	DA	LPV	DA	LPV	DA	LPV	DA
LPV DA	208	3/4	200	(200-3/4)			NA	
LNAV/VNAV DA	268	3/4	260	(300-3/4)			NA	
LNAV MDA	360	3/4	352	(400-3/4)			NA	
CIRCLING	460-1		660-1				NA	
	452	(500-1)	652	(700-1)				

NE-1, 22 FEB 2024 to 21 MAR 2024

NE-1, 22 FEB 2024 to 21 MAR 2024