

WAAS CH 77934 W10A	APP CRS 099°	Rwy Idg TDZE Apt Elev	5013 1043 1044
---------------------------------	------------------------	-----------------------------	---

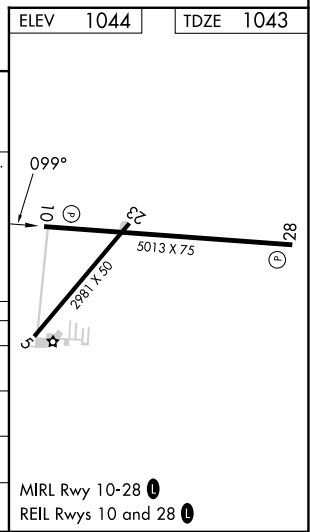
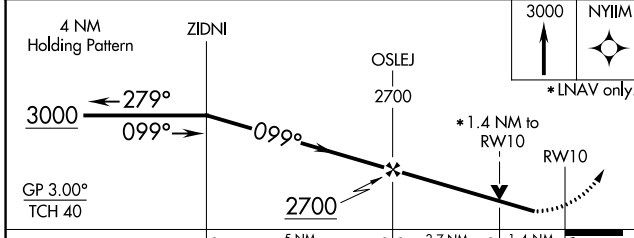
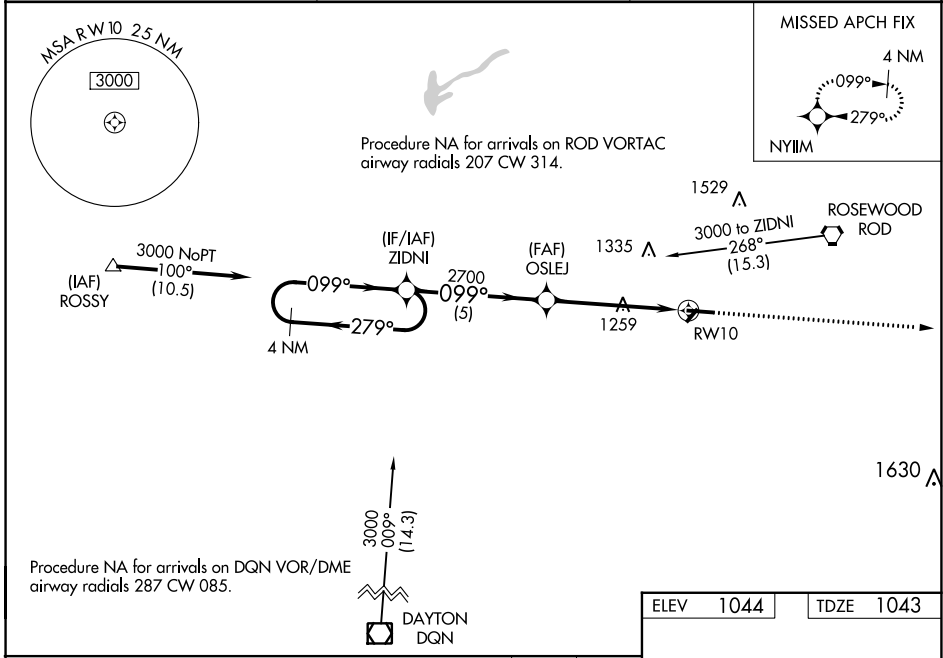
RNAV (GPS) RWY 10

SIDNEY MUNI (SCA)

⚠ For uncompensated Baro-VNAV systems, LNAV/VNAV NA below -22°C (-7°F) or above 54°C (130°F). DME/DME RNP-0.3 NA. Helicopter visibility reduction below ¾ SM NA. Baro-VNAV and VDP NA when using James M Cox Dayton Intl altimeter setting. Night Landing: Rwy 28 operational VGSIs required, remain on or above VGSIs glidepath until threshold. When local altimeter setting not received, use James M Cox Dayton Intl altimeter setting and increase all DA 53 feet and all MDA 60 feet; increase LPV all Cats and LNAV Cats C/D visibility ⅛ mile and Circling Cat C visibility ¼ mile.

MISSED APPROACH: Climb to 3000 direct NYIIM and hold.

AWOS-3 120.425	COLUMBUS APP CON 118.425 294.5	UNICOM 123.05 (CTAF)
--------------------------	--	--------------------------------



CATEGORY	A	B	C	D
LPV DA		1308-1	265 (300-1)	
LNAV/VNAV DA		1293-1	250 (300-1)	
LNAV MDA	1520-1	477 (500-1)	1520-1⅓	477 (500-1⅓)
C CIRCLING	1520-1	476 (500-1)	1640-1½ 596 (600-1½)	1640-2 596 (600-2)

EC-2, 22 FEB 2024 to 21 MAR 2024

EC-2, 22 FEB 2024 to 21 MAR 2024