

ATIS ★
118.6
CLINIC DEL
124.8
GND CON
121.6
SCOTTSDALE TOWER ★
119.9 (CTAF)
PHOENIX DEP CON
120.7 239.0

BLTYHE
117.4 BLH
Chan 121

BUCKEYE
110.6 BXK
Chan 43

GILA BEND
116.6 GBN
Chan 113

Approximate distance from Take-off area
to JONHH, 18 NM.

ST. JOHNS
112.3 SJN
Chan 70

ALBUQUERQUE
113.2 ABQ
Chan 79

PHOENIX
115.6 PXR
Chan 103

STANFIELD
114.8 TFD
Chan 95

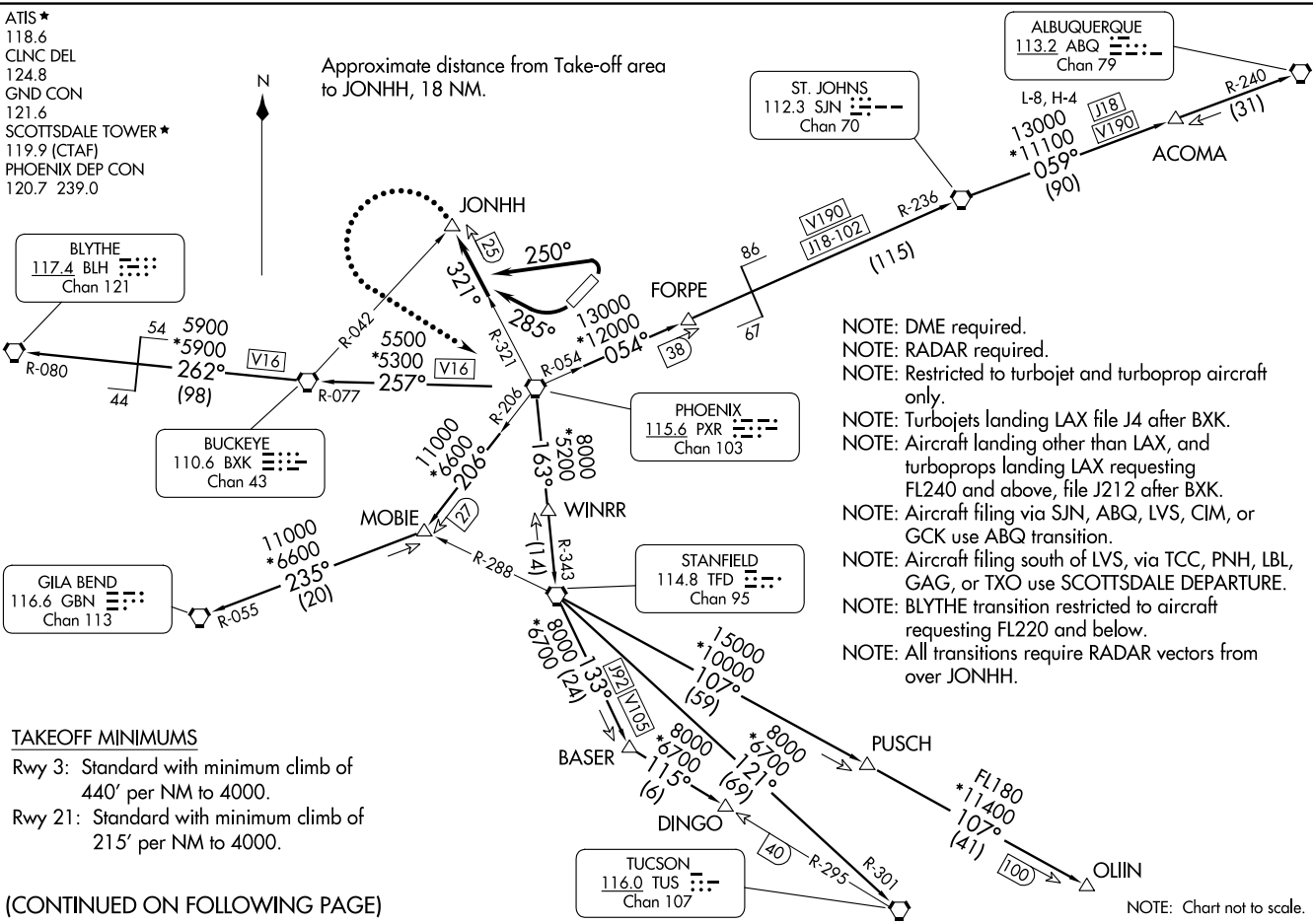
TUCSON
116.0 TUS
Chan 107

TAKEOFF MINIMUMS
Rwy 3: Standard with minimum climb of
440' per NM to 4000.
Rwy 21: Standard with minimum climb of
215' per NM to 4000.

(CONTINUED ON FOLLOWING PAGE)

NOTE: DME required.
NOTE: RADAR required.
NOTE: Restricted to turbojet and turboprop aircraft
only.
NOTE: Turboprops landing LAX file J4 after BXK.
NOTE: Aircraft landing other than LAX, and
turboprops landing LAX requesting
FL240 and above, file J212 after BXK.
NOTE: Aircraft filing via SJN, ABQ, LVS, CIM, or
GCK use ABQ transition.
NOTE: Aircraft filing south of LVS, via TCC, PNH, LBL,
GAG, or TXO use SCOTTSDALE DEPARTURE.
NOTE: BLYTHE transition restricted to aircraft
requesting FL220 and below.
NOTE: All transitions require RADAR vectors from
over JONHH.

NOTE: Chart not to scale.





DEPARTURE ROUTE DESCRIPTION

TAKEOFF RUNWAY 3: Climbing left turn heading 250° to intercept and proceed via PXR R-321 to JONHH INT. Thence. . . .

TAKEOFF RUNWAY 21: Climbing right turn heading 285° to intercept and proceed via PXR R-321 to JONHH INT. Thence. . . .

. . . .via RADAR vectors to (assigned route).

LOST COMMUNICATIONS: If not in contact with departure control at JONHH INT, turn left direct to PXR VORTAC, thence via assigned transition. Expect filed altitude 3 minutes after departure.

ALBUQUERQUE TRANSITION (SCOT7.ABQ): From over JONHH INT on RADAR vectors and PXR R-054 and SJN R-236 to SJN VORTAC, then on SJN R-059 and ABQ R-240 to ABQ VORTAC.

BLYTHE TRANSITION (SCOT7.BLH): From over JONHH INT on RADAR vectors and BXK R-077 to BXK VORTAC, then on BXK R-262 and BLH R-080 to BLH VORTAC.

BUCKEYE TRANSITION (SCOT7.BXK): From over JONHH INT on RADAR vectors and BXK R-077 to BXK VORTAC.

DINGO TRANSITION (SCOT7.DINGO): From over JONHH INT on RADAR vectors and TFD R-343 to TFD VORTAC, then on TFD R-133 to BASER INT, and then on TUS R-295 to DINGO INT.

GILA BEND TRANSITION (SCOT7.GBN): From over JONHH INT on RADAR vectors and PXR R-206 to MOBIE INT, then on GBN R-055 to GBN VORTAC.

OLIIN TRANSITION (SCOT7.OLIIN): From over JONHH INT on RADAR vectors and TFD R-343 to TFD VORTAC, then on TFD R-107 to PUSCH INT, and then on TFD R-107 to OLIIN INT.

TUCSON TRANSITION (SCOT7.TUS): From over JONHH INT on RADAR vectors and TFD R-343 to TFD VORTAC, then on TFD R-121 and TUS R-301 to TUS VORTAC.

SW-4, 22 FEB 2024 to 21 MAR 2024

SW-4, 22 FEB 2024 to 21 MAR 2024