

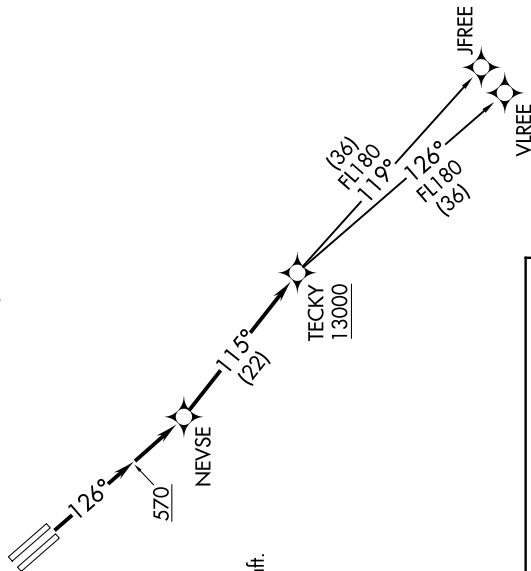
SW-2, 22 FEB 2024 to 21 MAR 2024

D-ATIS  
126.95  
CLNC DEL  
118.0  
CPDLC  
GND CON  
121.7  
SAN JOSE TOWER \*  
124.0 257.6  
NORCAL DEP CON  
121.3 270.35

**TAKEOFF MINIMUMS**

Rwys 12L/R: Standard with minimum climb of 500' per NM to 570.

**TOP ALTITUDE:  
FL190**



NOTE: RNAV 1  
NOTE: RADAR required for non-GPS equipped aircraft.  
NOTE: DME/DME/IRU or GPS required.

**DEPARTURE ROUTE DESCRIPTION**

**TAKEOFF RUNWAYS 12L, 12R:** Climb on heading 126° to 570, then direct NEVSE, then on track 115° to cross TECKY at or above 13000, thence. . .

. . . on (transition). Maintain FL190. Expect filed altitude 10 minutes after departure.

**JFREE TRANSITION (TECKY4.JFREE)**  
**VFREE TRANSITION (TECKY4.VFREE)**

NOTE: Chart not to scale.

SW-2, 22 FEB 2024 to 21 MAR 2024