

WAAS CH <b>63140</b> <b>W27A</b>	APP CRS <b>276°</b>	Rwy Idg TDZE Apt Elev	<b>4056</b> <b>1518</b> <b>1519</b>
--	------------------------	-----------------------------	---

# RNAV (GPS) RWY 27

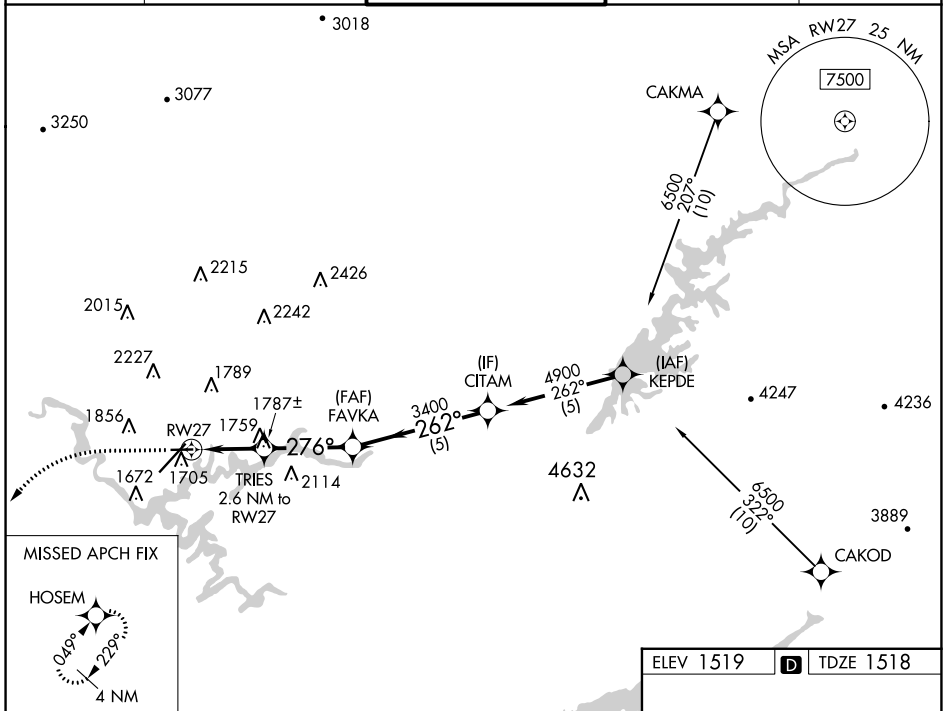
TRI-CITIES (TRI)

RNP APCH.

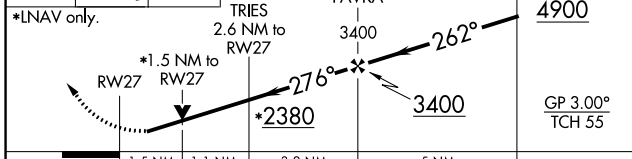
**⚠** Circling to Rwy 9 NA at night. Circling NA northwest of Rws 9 and 23.  
**⚠** Rwy 27 helicopter visibility reduction below 3/4 SM NA. For uncompensated Baro-VNAV systems, LNAV/VNAV NA below -1.4°C or above 54°C.

MISSED APPROACH: Climb to 2000 then climbing left turn to 3600 direct HOSEM and hold.

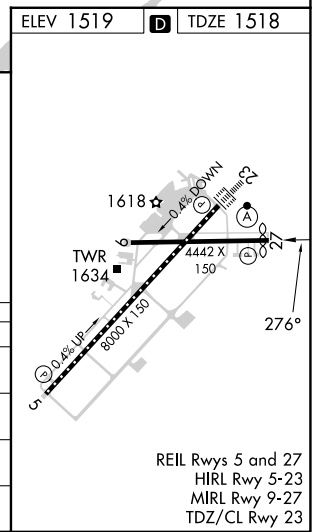
ATIS <b>118.25</b>	TRI-CITY APP CON ★ <b>134.425 349.0</b>	TRI-CITY TOWER ★ <b>119.5 (CTAF) 257.8</b>	GND CON <b>121.7 348.6</b>	UNICOM <b>122.95</b>
-----------------------	--	---	-------------------------------	-------------------------



2000 3600 HOSEM  
 VGSI and RNAV glidepath not coincident (VGSI Angle 3.00/TCH 32).  
 CITAM



CATEGORY	A	B	C	D
LPV DA	1788-7/8 270 (300-7/8)			
LNAV/VNAV DA	2034-13/4 516 (600-13/4)			
LNAV MDA	2020-1	502 (600-1)	2020-13/8	502 (600-13/8)
<b>C</b> CIRCLING	2120-1 601 (700-1)	2180-1 661 (700-1)	2320-2 1/4 801 (900-2 1/4)	2500-3 981 (1000-3)



SE-1, 22 FEB 2024 to 21 MAR 2024

SE-1, 22 FEB 2024 to 21 MAR 2024

REIL Rws 5 and 27  
 HIRL Rwy 5-23  
 MIRL Rwy 9-27  
 TDZ/CL Rwy 23