

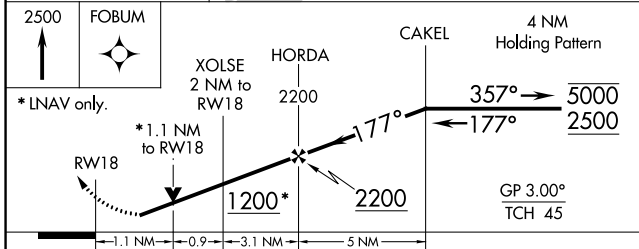
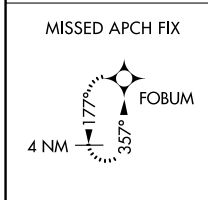
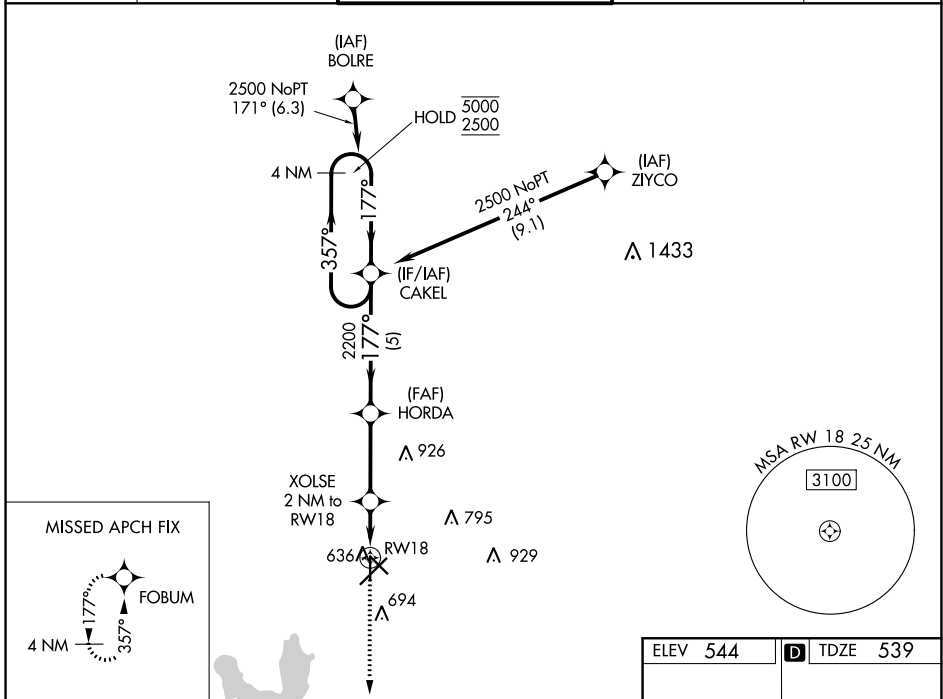
WAAS CH <b>58337</b> <b>W18A</b>	APP CRS <b>177°</b>	Rwy Idg <b>4832</b> TDZE <b>539</b> Apt Elev <b>544</b>
--	------------------------	---

# RNAV (GPS) RWY 18

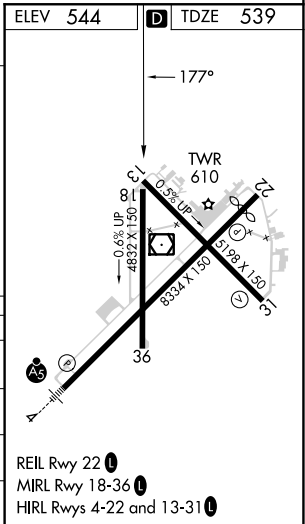
TYLER POUNDS RGNL (TYR)

RNP APCH.	MISSED APPROACH: Climb to 2500 direct FOBUM and hold.
<p><b>⚠</b> Rwy 18 helicopter visibility reduction below 3/4 SM NA. For uncompensated Baro-VNAV systems, LNAV/VNAV NA below -6°C or above 54°C.</p>	

ATIS <b>126.25</b>	LONGVIEW APP CON* <b>128.75 379.15</b>	POUNDS TOWER* <b>120.1(CTAF) 257.8</b>	GND CON <b>121.9</b>	UNICOM <b>122.95</b>
-----------------------	---	---	-------------------------	-------------------------



CATEGORY	A	B	C	D
LPV DA		789-1	250 (300-1)	
LNAV/DA		818-1	279 (300-1)	
LNAV MDA		900-1	361 (400-1)	
<b>C</b> CIRCLING	980-1 436 (500-1)	1020-1 476 (500-1)	1160-1 3/4 616 (700-1 3/4)	1280-2 1/4 736 (800-2 1/4)



SC-2, 22 FEB 2024 to 21 MAR 2024

SC-2, 22 FEB 2024 to 21 MAR 2024